

SEASEARCH – South-West diver record highlights 2015

Chris Wood

Joint Seasearch Coordinator for UK/Ireland

Marine Conservation Society



The background of the slide is an underwater photograph. In the upper left, a diver in full gear is swimming. In the foreground, there is a large, vibrant orange coral structure. The water is a deep teal color.

About Seasearch
2015 Surveys in Marine Protected Areas in the
South West
2015 Species Highlights in the South West

About Seasearch



- Seasearch developed from collaboration between the Marine Conservation Society (MCS) and Nature Conservancy Council; (NCC) in 1980s
- Re-launched in 2003 as a partnership between MCS, County Wildlife Trusts, SNCBs, diving organisations and others

- The Seasearch

- Data from
- 550,000
- 62,000
- Additional

- Data goes to

- Statutory Nature Conservation Bodies (JNCC, NE, SNH, NRW, DOENI, IOM)
- National and local biodiversity records centres
- Species data is freely available through the National Biodiversity Network (NBN)



Scottish Natural Heritage
All of nature for all of Scotland



Joint Nature Conservation Committee



About Seasearch



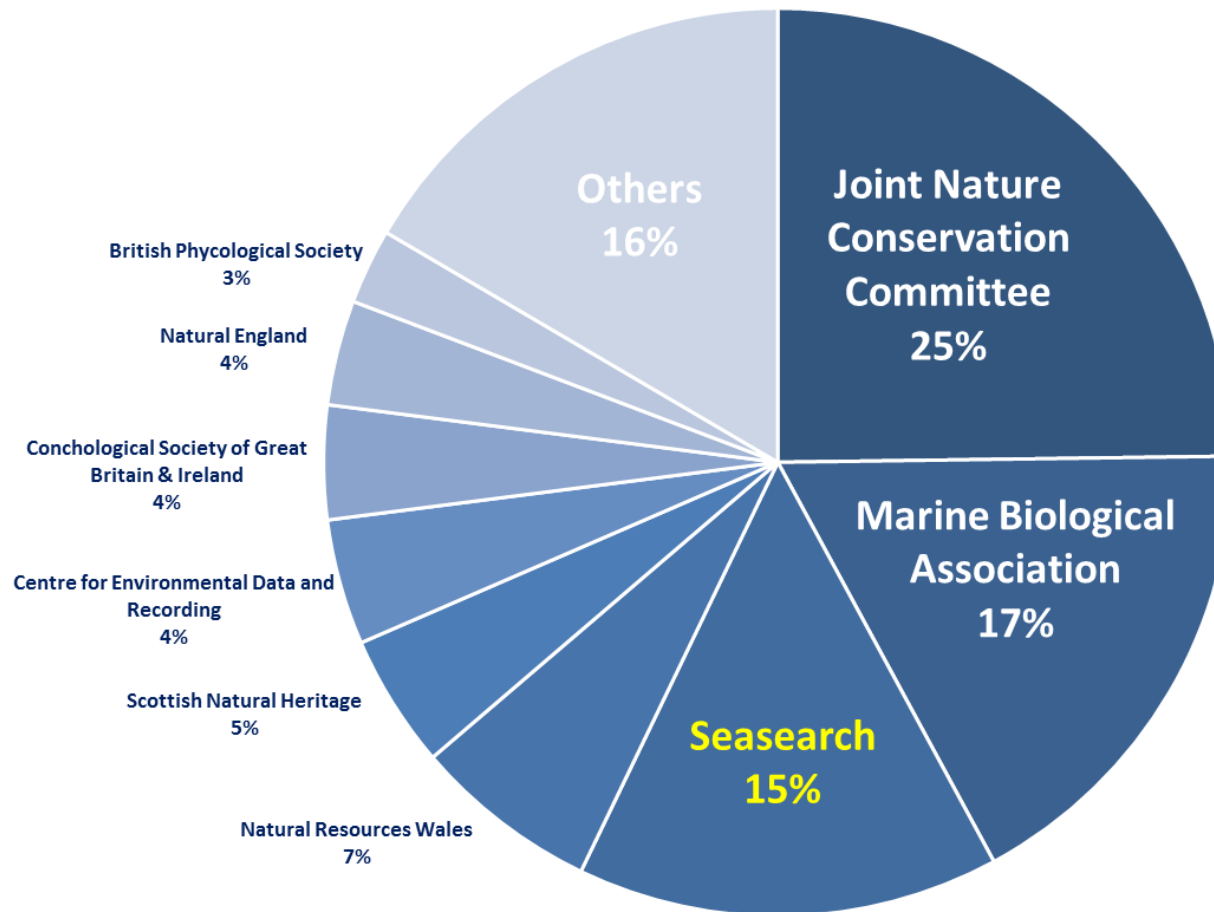
Seasearch data is collected by volunteers



About Seasearch



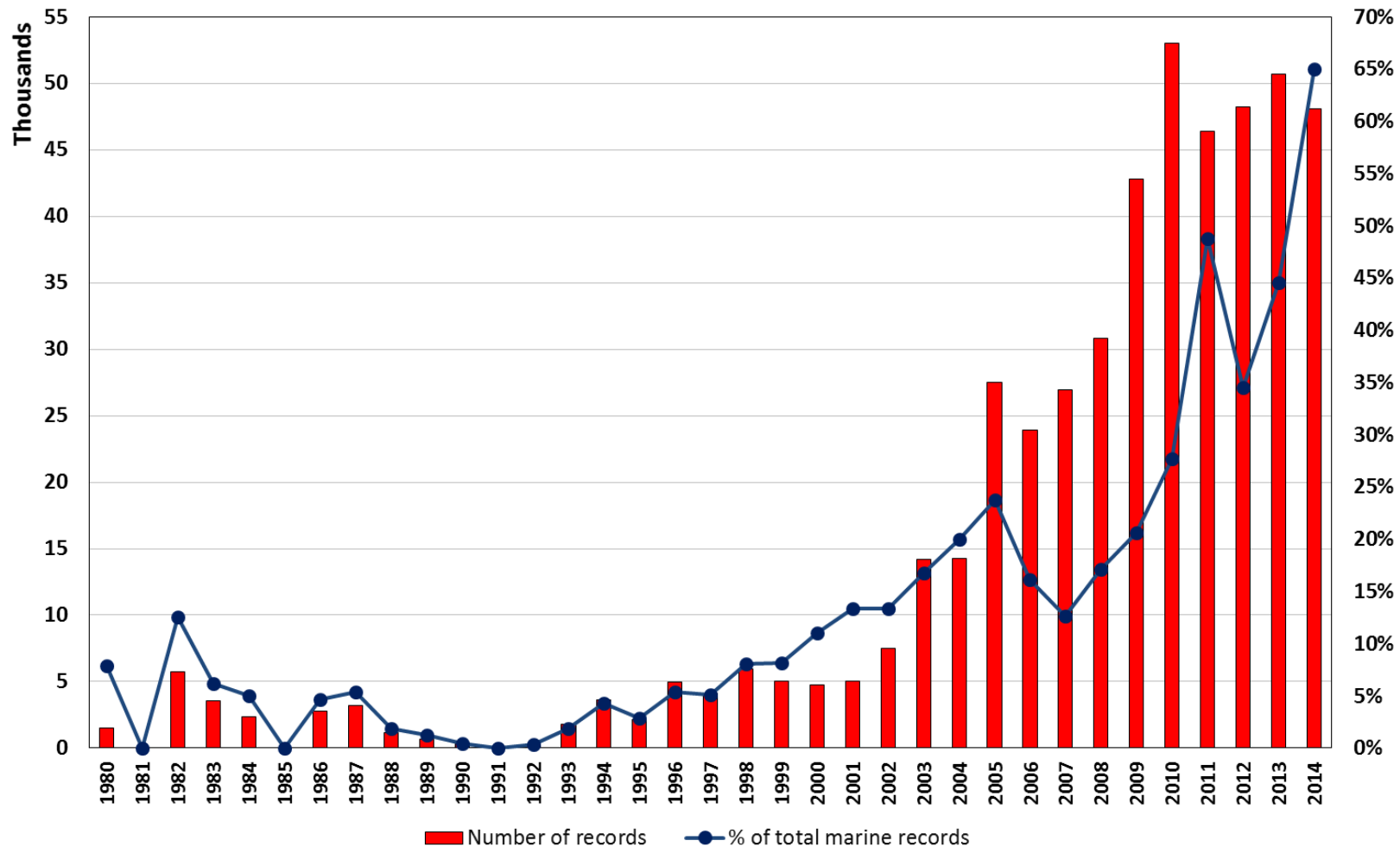
Sources of Marine Species Records on the NBN Gateway



About Seasearch



Species Records shared by Seasearch via the NBN Gateway

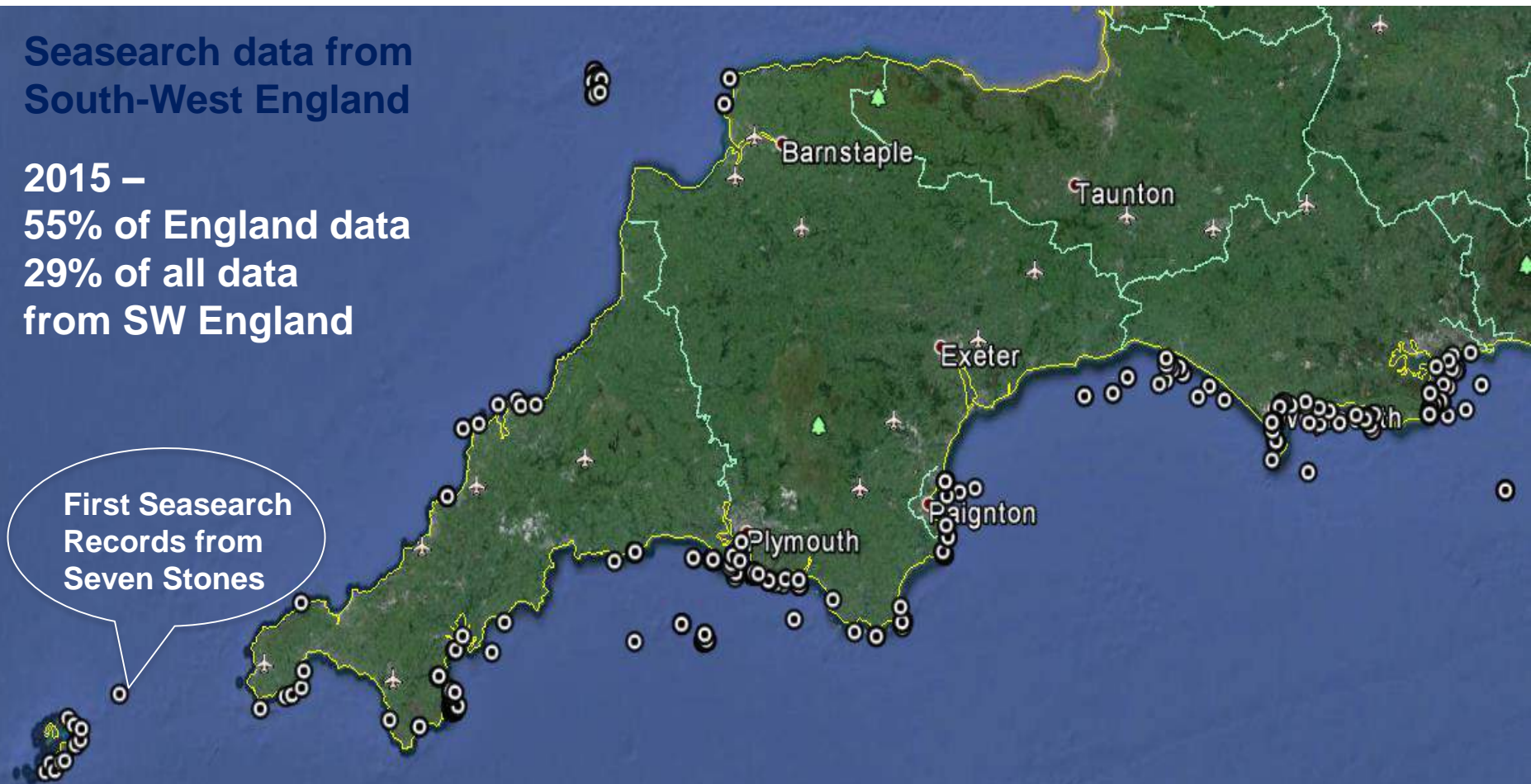


About Seasearch



**Seasearch data from
South-West England**

**2015 –
55% of England data
29% of all data
from SW England**



**First Seasearch
Records from
Seven Stones**

Seasearch and MPAs



Seasearch Data has helped in the designation of MPAs

- 2009 SAC Reef designations in the South-West drew on Seasearch data
- Finding Sanctuary work drew on Seasearch data for inshore sites
- Seasearch Reports prior to first tranche designations 2013
- Seasearch data, photos and reports prior to second tranche MCZ designations 2016



Hartland Point to Tintagel rMCZ – Seasearch surveys 2014

Seasearch surveys were carried out on 20th September 2014 by members of Appleton Sub Aqua Club to add habitat and data to existing information for this rMCZ. The area surveyed was on the west facing coast south of Hartland Point opposite Knap Head, and about 1.5km offshore. One site was called Knap Head and the other, Welcombe Reef after the nearest village. These sites were dived of which Seasearch records were obtained from the two rock sites, which were similar.

Habitats Recorded:

Circumferential Bedrock – gently sloping rock 12-14m BCD with gullies up to 4m deep. Extensive fissures in the rock. Upper surfaces with short red algal turf, vertical surfaces dominated by encrusting sponges with jewel anemones and a stony short hydroid turf. (Photos below)



Species recorded: A full list of species recorded is in the Marine Recorder survey data. Species of particular interest were as follows:
Paltheurus alpinus, cowfish. 1001 species recorded at both sites, photos supplied (right)

Eumetaria vermicosa, glass sea fan: 1001 species recorded at both sites, photos supplied (photographs of two different colonies below)



Seasearch and MPAs



Seasearch Data has helped in the designation of MPAs

- Future designations?
 - Studland – further surveys in 2015
 - Falmouth – originally recommended as a Reference Area



Seasearch and MPAs



Surveillance of existing MPAs

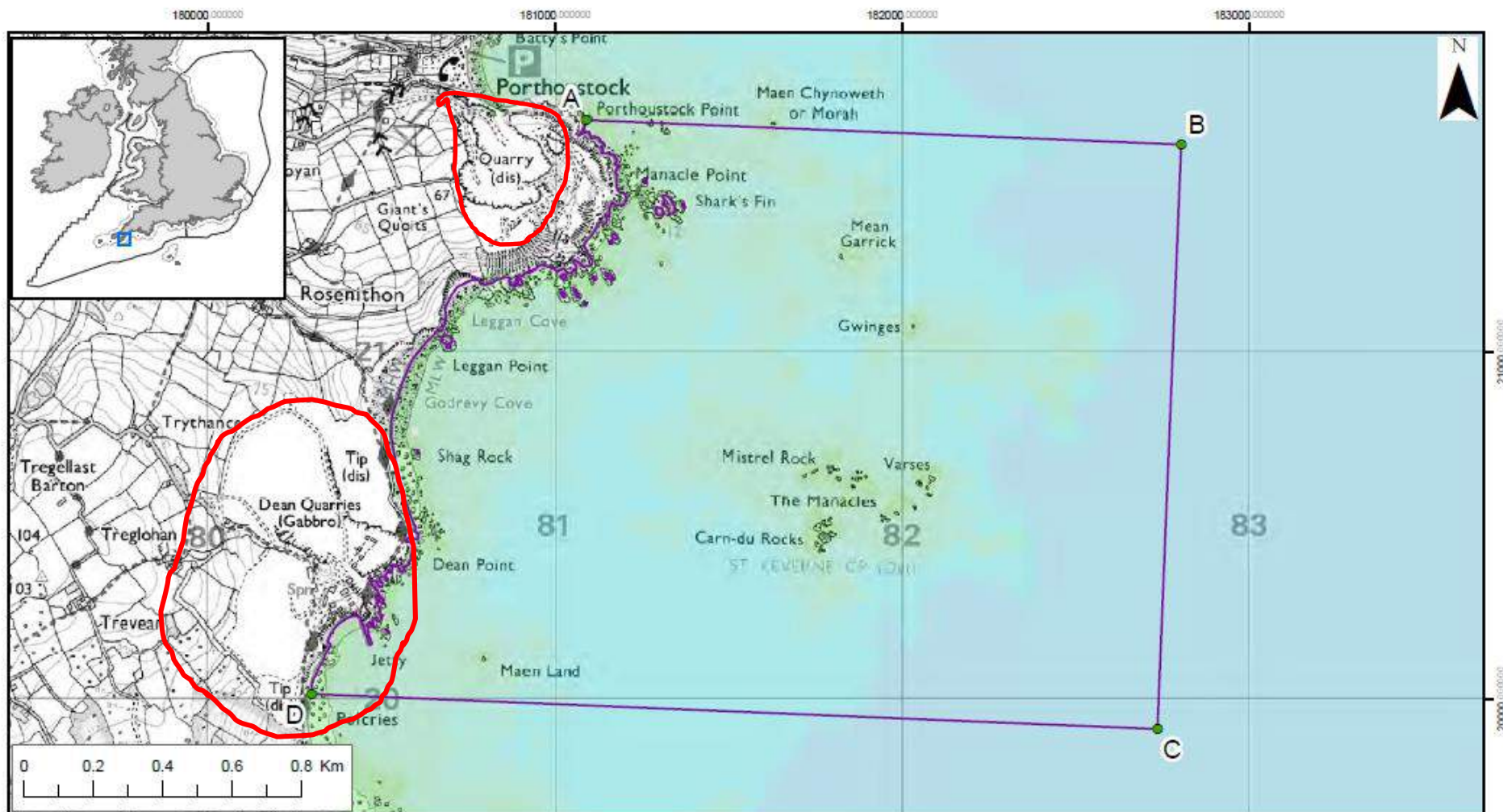
- Poole Rocks MCZ
- Chesil Beach & Stennis Ledges MCZ
- Lyme Bay closed area/SAC
- Start Point to Plymouth Sound and Eddystone SAC



Seasearch and MPAs



The Manacles and Dean Quarry



The Manacles MCZ Boundary

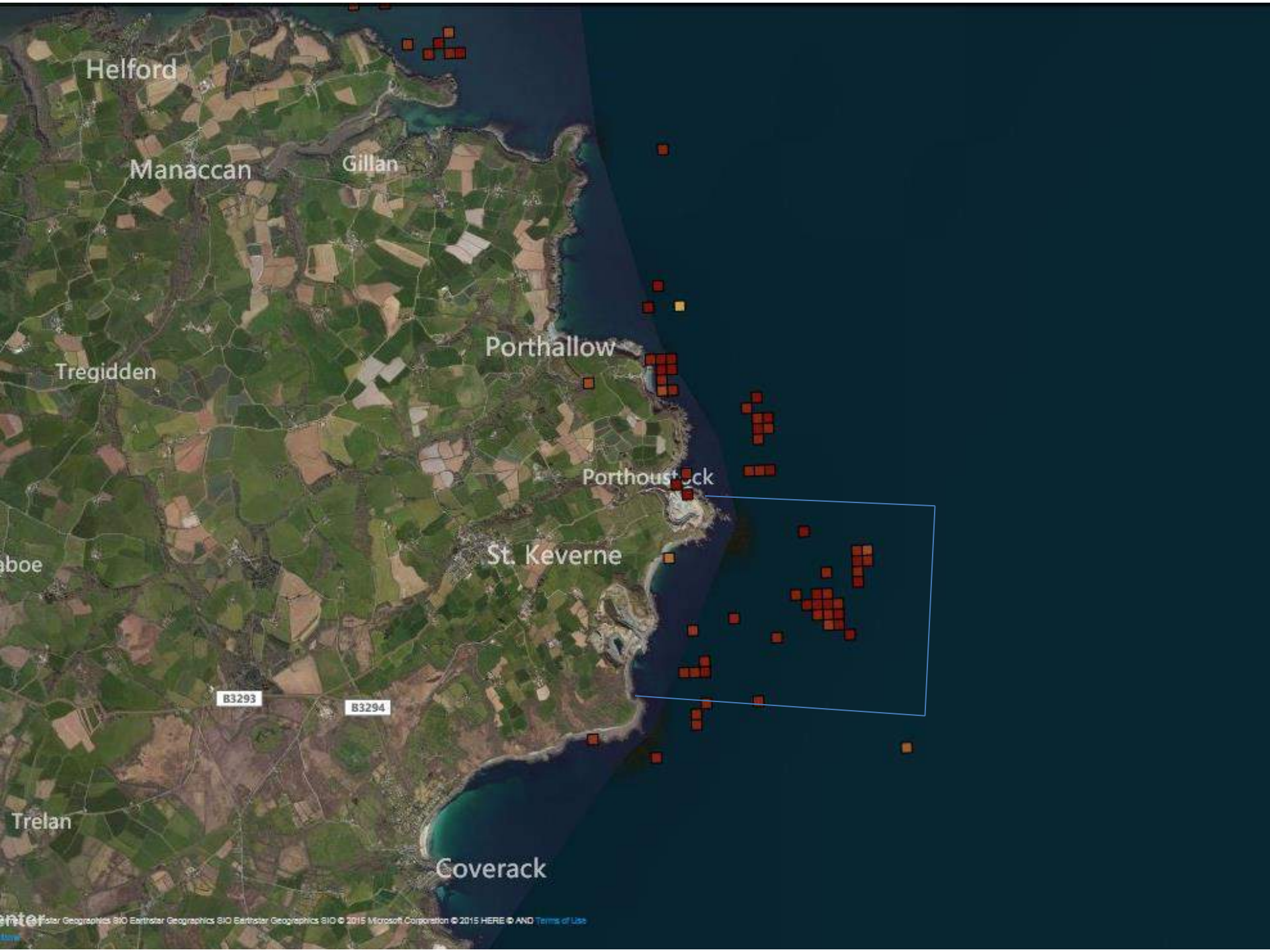
- Marine Conservation Zone
- MCZ boundary co-ordinates
- 12nM Territorial Seas Limit
- Land

Point	Lat	Long
A	50°3' 17.164" N	5°3' 34.398" W
B	50°3' 17.144" N	5°2' 8.124" W
C	50°2' 22.669" N	5°2' 8.127" W
D	50°2' 22.693" N	5°4' 10.637" W

Depth Areas (metres)

	-20.0 - -10.0		25.1 - 50.0
	-9.9 - -5.0		50.1 - 100.0
	-4.9 - 0.0		100.1 - 250.0
	0.1 - 5.0		250.1 - 500.0
	5.1 - 10.0		500.1 - 1000.0
	10.1 - 25.0		

Contains information from the Ordnance Survey
 © Crown Copyright and database right 2013.
 Ordnance Survey 100022021. UKHO Data
 © British Crown Copyright. All rights reserved.
 Permission Number Defra012013.001. This
 product has been derived in part from material
 obtained from the UK Hydrographic Office with
 the permission of the Controller of Her Majesty's
 Stationery Office and UK Hydrographic Office
 (www.ukho.gov.uk). Map produced by
 Natural England 2013.
 Reference: Theme ID: 1477653
 Map Projection: British National Grid



Helford

Manaccan

Gillan

Porthallow

Tregidden

Porthoustock

St. Keverne

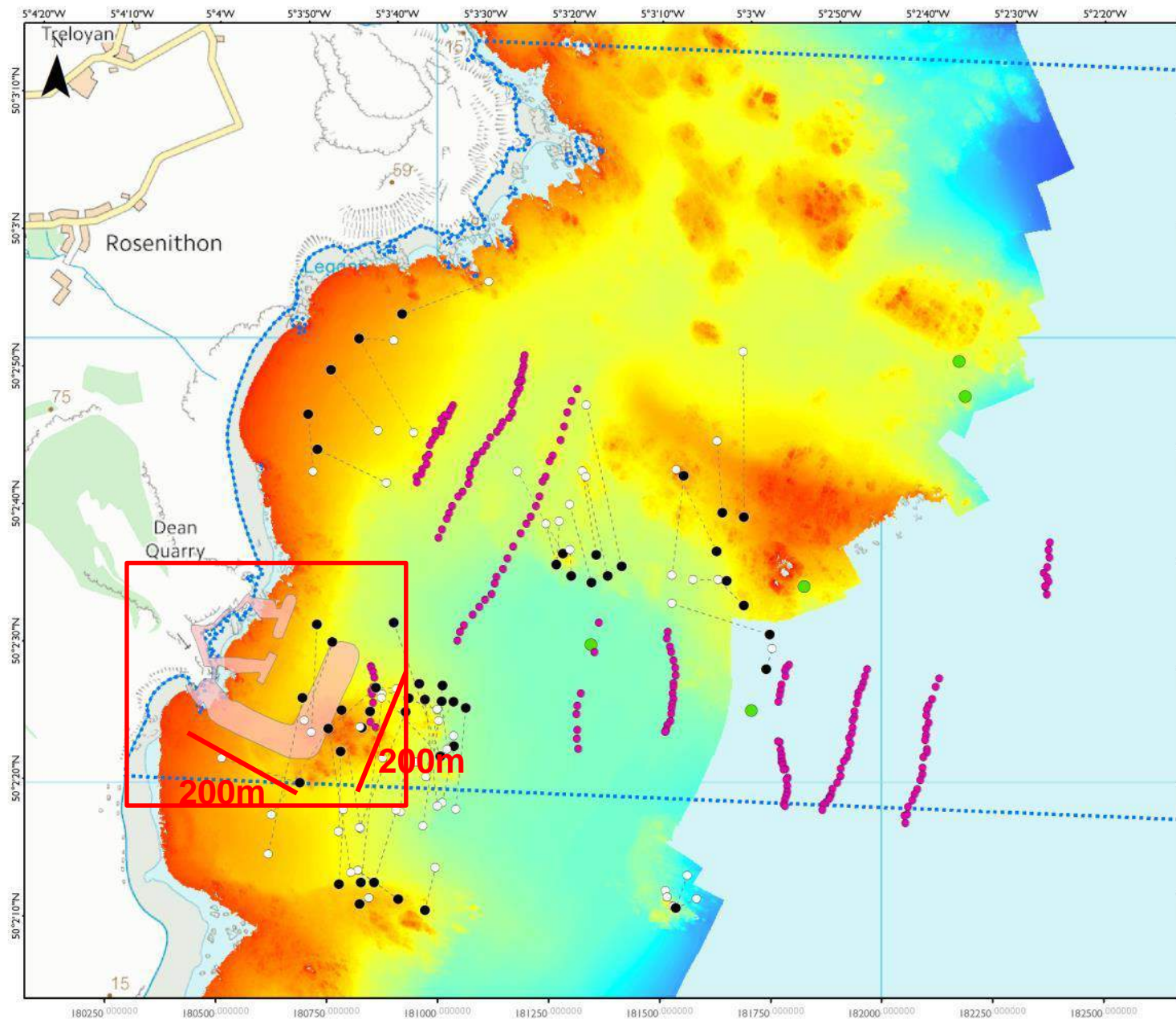
B3293

B3294

Treboe

Trelan

Coverack



DEAN QUARRY and MANACLES MARINE CONSERVATION ZONE

Locations of seabed surveys in area of proposed breakwater and jetty developments for Dean Quarry

CONTACT(S):

JO ANSELM
(info@porthkerris.com)

DR MATTHEW WITT
(m.j.witt@exeter.ac.uk)

Seasearch and photographic surveys conducted by voluntary SCUBA divers. Boat resources provided by Porthkerris Divers, mapping by the University of Exeter ESI and surveys to Seasearch protocol. Including CIFCA ROV and drop camera location(s).

Type

- IN
- OUT
- - - Dive transect (inferential)
- 20140728_DDV_bng (CIFCA)
- 20130812_ROV_bng (CIFCA)
- Breakwater development footprint
- Manacles MCZ boundary

Depth (LAT, m)

High : 3.333
Low : -49.013

0 200 Meters

0 0.1 Nautical Miles

PROJECTION: British National Grid
MAP NOT TO BE USED FOR NAVIGATION

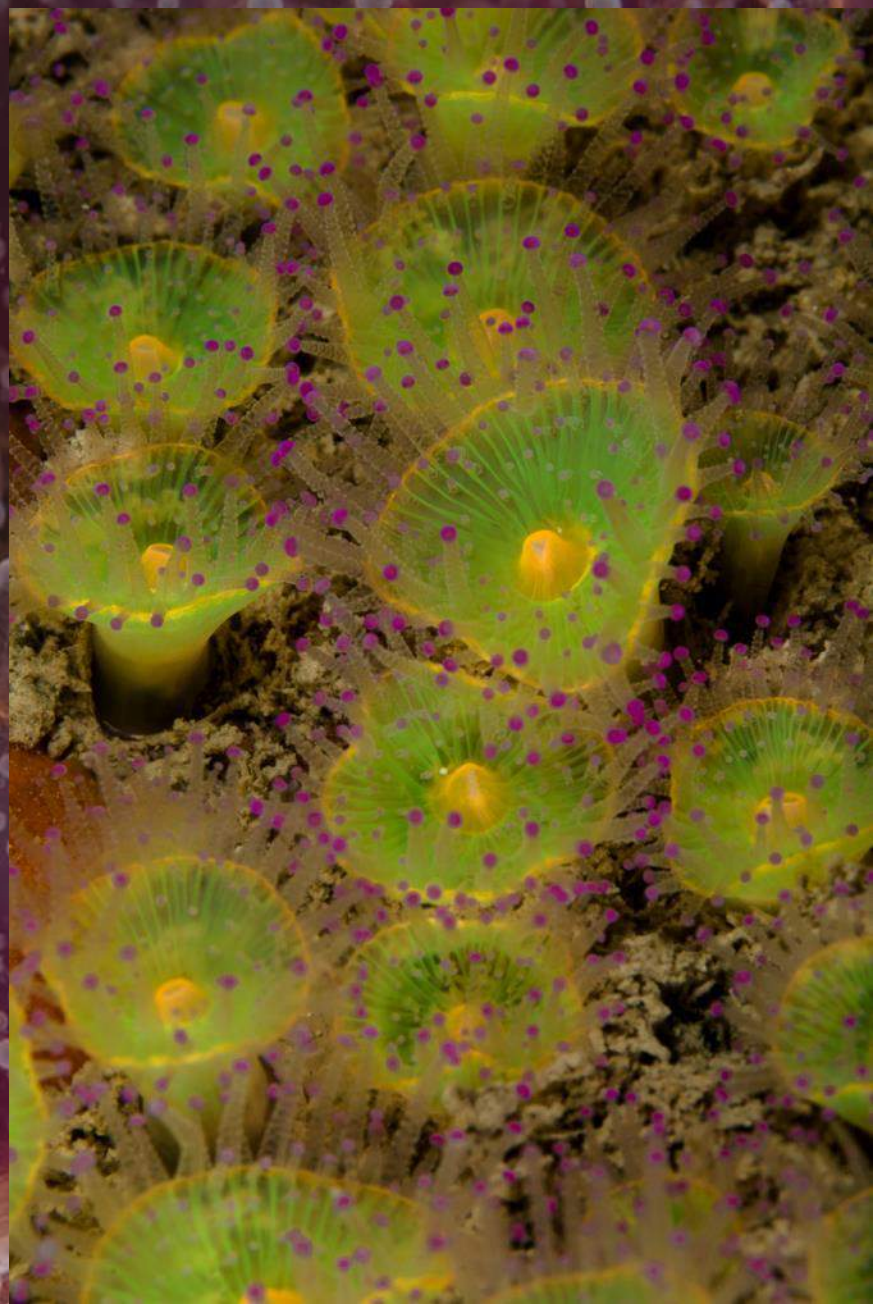
1 cm = 117 meters at A4

Date Saved: 09/08/2015 10:26:26

Features	General management approach
Intertidal coarse sediment	Maintain in favourable condition
Subtidal sand	Maintain in favourable condition
Subtidal macrophyte dominated sediment	Recover to favourable condition
Moderate energy intertidal rock	Maintain in favourable condition
Moderate energy infralittoral rock	Maintain in favourable condition
Moderate energy circalittoral rock	Maintain in favourable condition
Maerl beds	Recover to favourable condition
Sea-fan anemone (<i>Amphianthus dohrnii</i>)	Maintain in favourable condition
Spiny lobster (<i>Palinurus elephas</i>)	Recover to favourable condition
Stalked jellyfish (<i>Haliclystus auricula</i>)	Maintain in favourable condition



High/Medium Energy Infralittoral Rock
“maintain in favourable condition”
Direct physical impact from harbour works





Subtidal Macrophyte dominated sediment/Maerl Beds
“recover to favourable condition”
Heavily degraded – close to proposed works



Pink Sea Fan forests

The prime feature of the area but not listed in designation features

Limited physical impact but extensive sedimentation effects



False Cowries

Spiny Lobster *Palinurus elephas*
“Recover to favourable condition”
Direct physical and sedimentation
impacts

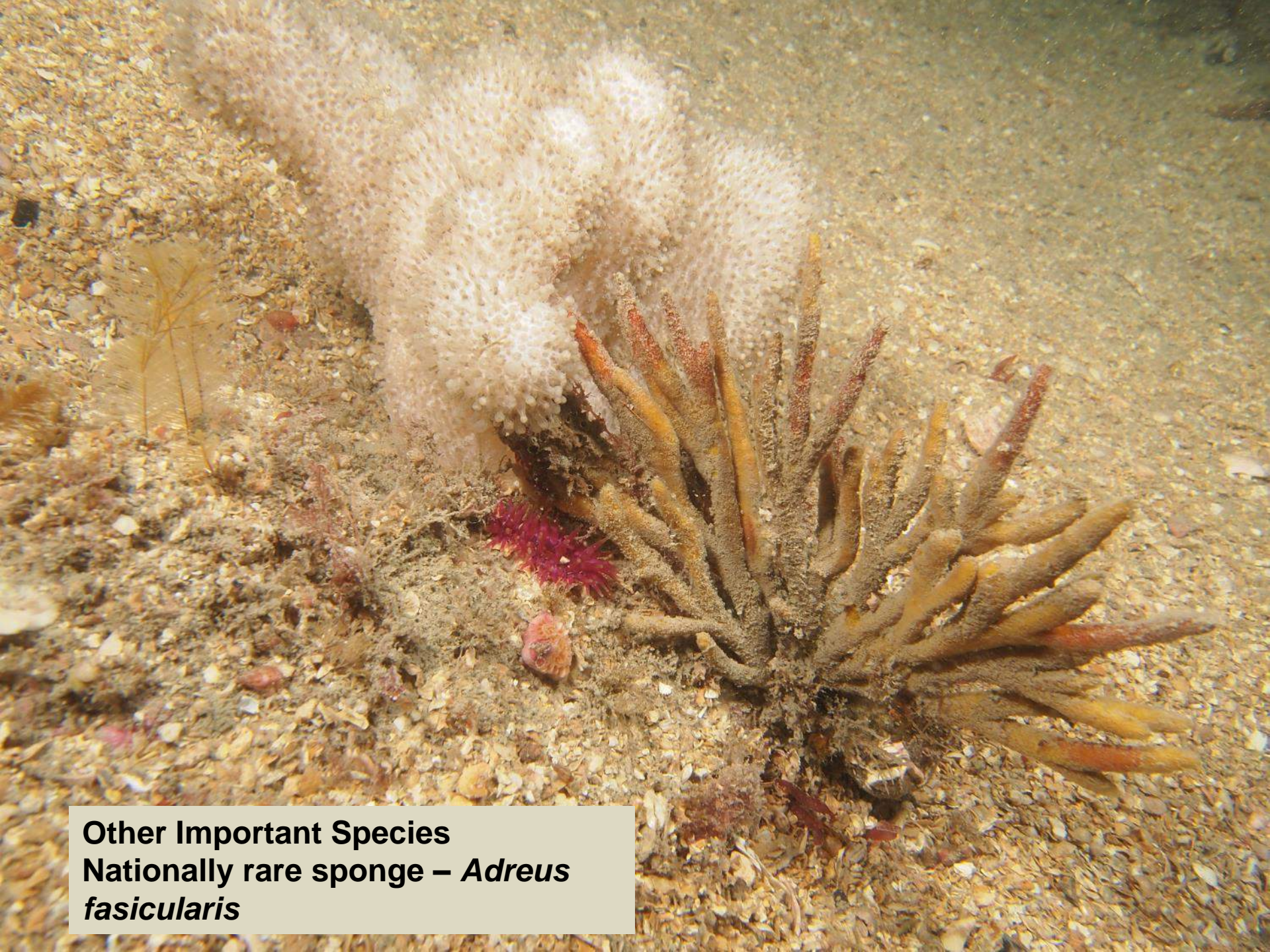


Stalked Jellyfish *Haliclystus* sp.

“Maintain in favourable condition”

Sedimentation and possible physical impacts





Other Important Species
Nationally rare sponge – *Adreus*
fascicularis



**Seasearch
Exeter University
Porthkerris Dive Centre
MCS
Cornwall Wildlife Trust**

working together



Species records for 2015



Northerly Species

- *Porania pulvillus* – red cushion star, Manacles and Hand Deepes
- *Diazona violacea* – football sea squirt, Lundy, Isles of Scilly, S Devon
- *Chirolophis ascanii* – Yarrell's blenny, Hand Deepes



Species records for 2015



Southerly Species

- *Pereclimenes sagittifer* - Shrimp, Dorset, but not Swanage Pier this year
- *Tripterygion deleasi* - Black blenny, Dorset, Plymouth
- *Symphodus bailloni* - Baillet's wrasse, Dorset
- *Parablennius ruber* - Red blenny, Isles of Scilly & Hand Deep
- *Bolteniopsis prenanti* – ascidian, Isles of Scilly, 2nd NBN record



Species records for 2015



'Local' Species

- *Axinella damicornis* – Crumpled duster sponge, W Devon, S Cornwall, Isles of Scilly
- *Hexadella racovitzai* – W Devon & Isles of Scilly
- *Phallusia mamillata* – Dorset, Lyme Bay, East Devon
- *Aiptasia mutabilis* – Trumpet anemone, Dorset & Lundy



Species records for 2015



Rare Species

- *Atrina fragilis* – Fan mussel, unconfirmed record from Dorset
- *Amphianthus dohrnii* – Sea fan anemone, W Devon, Whitsand Bay, Manacles



Species records for 2015



‘Rare’ Nudibranchs

- *Tritonia nilsodhneri* – Sea fan nudibranch, more common in 2015
- *Okenia elegans* – Dartmouth, Plymouth, Lizard
- *Discodoris rosi* – Eddystone, Hand Deep, Manacles, (no NBN records before 2015)
- *Tritonia manicata* – Dorset, (previous NBN records Jersey 1983 & Shetland 1987)



Species records for 2015



‘Temporal’ Species

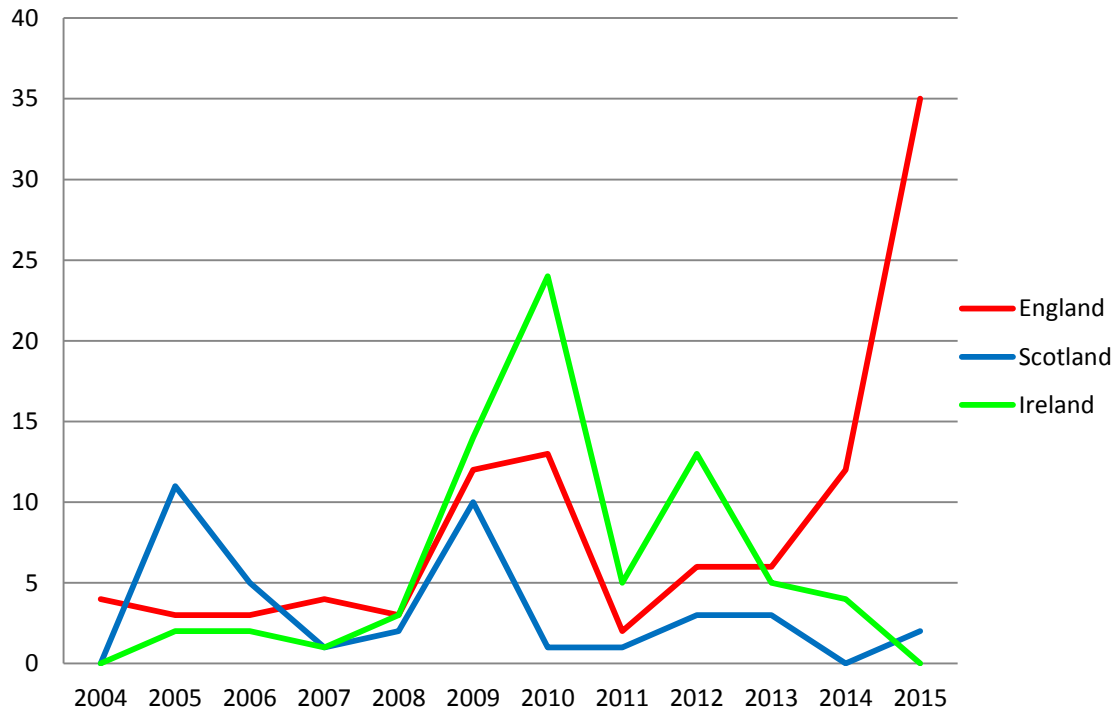
- *Rhizostoma pulmo* – Barrel jellyfish, usually a summer species but all year round in 2015
- *Cyclopterus lumpus* – Lumpsucker, inshore in spring to breed but mostly northerly – here at Falmouth



Species records for 2015



Seasearch *Palinurus elephas* Records



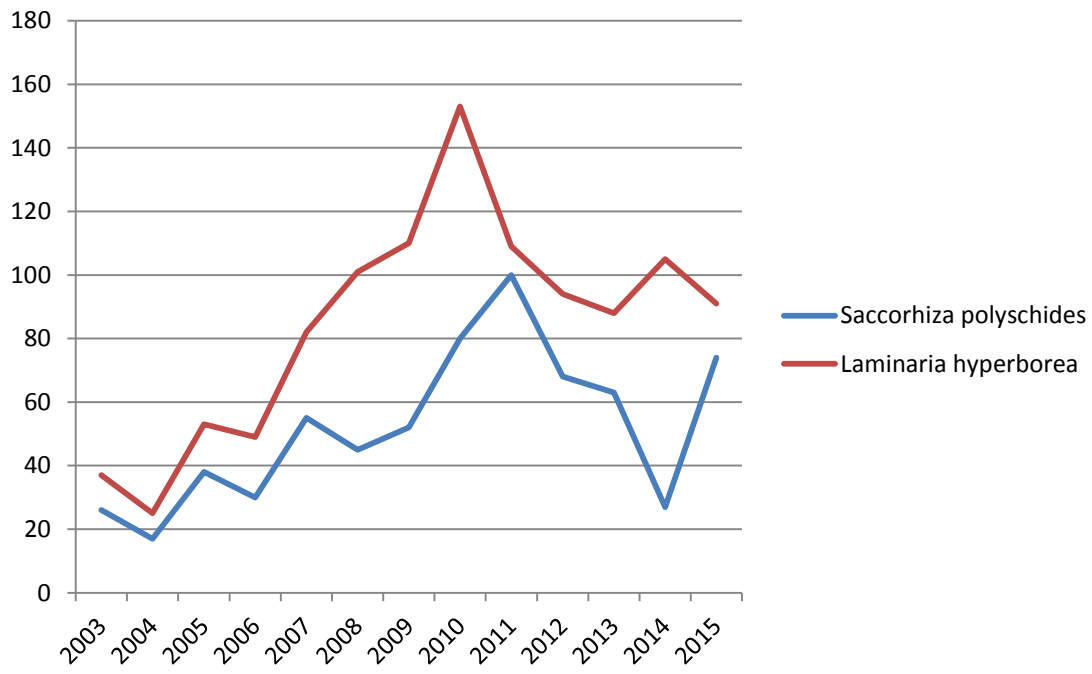
- All England records in South West
- All records are of small specimens
- Real recovery or temporary blip?



Species records for 2015



Saccorhiza polyschides vs *Laminaria hyperborea*



Species records for 2015



Thanks to all the SW Seasearch recorders in 2015

Photos by:

Chris Wood, Charlotte Bolton, Mark Webster, Chris Webb, Fiona Crouch, Hayden Close, Jan Davies, Sally Sharrock

