

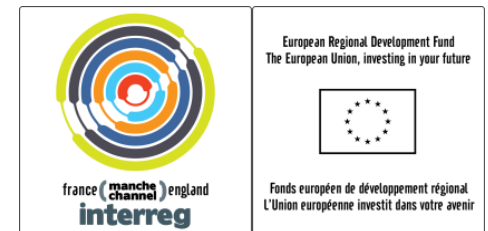
Valuing Ecosystem Services in the Western Channel (VALMER)

Olivia Langmead^{1,2}, Tara Hooper³, Nicky Beaumont³ & Charly Griffiths²

¹Plymouth University Marine Institute

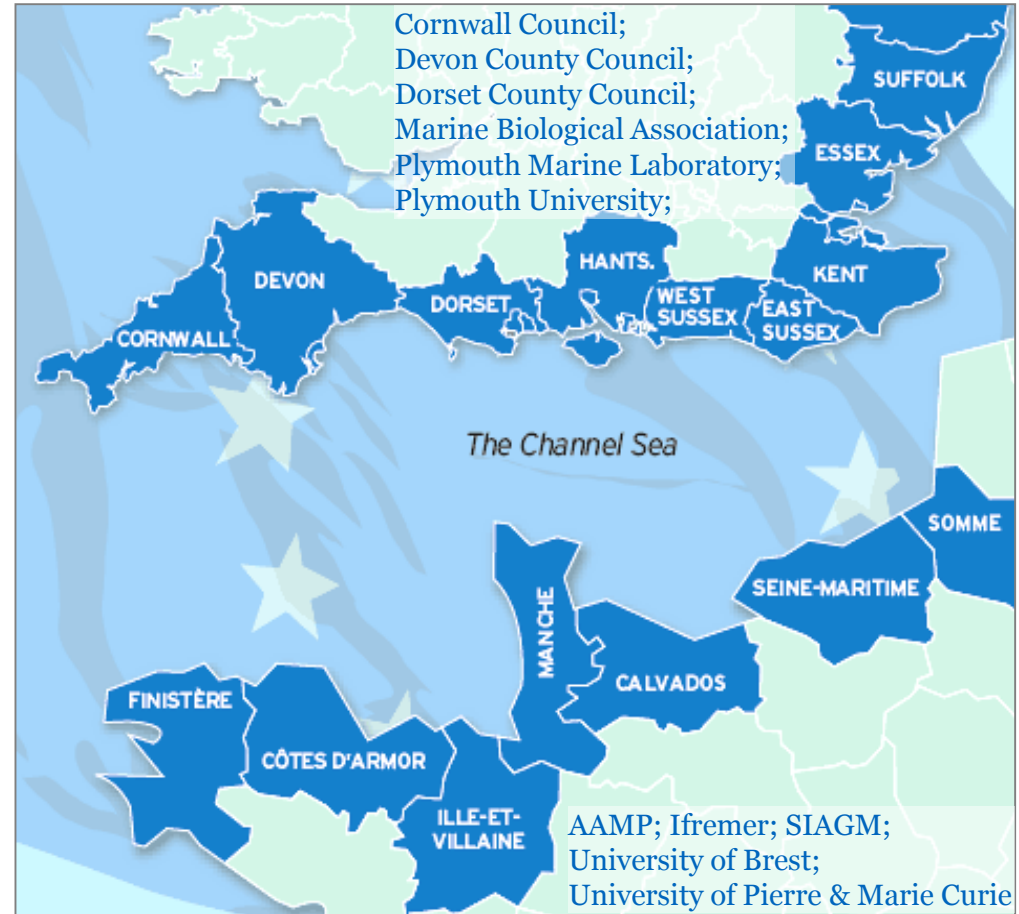
²Marine Biological Association

³Plymouth Marine Laboratory



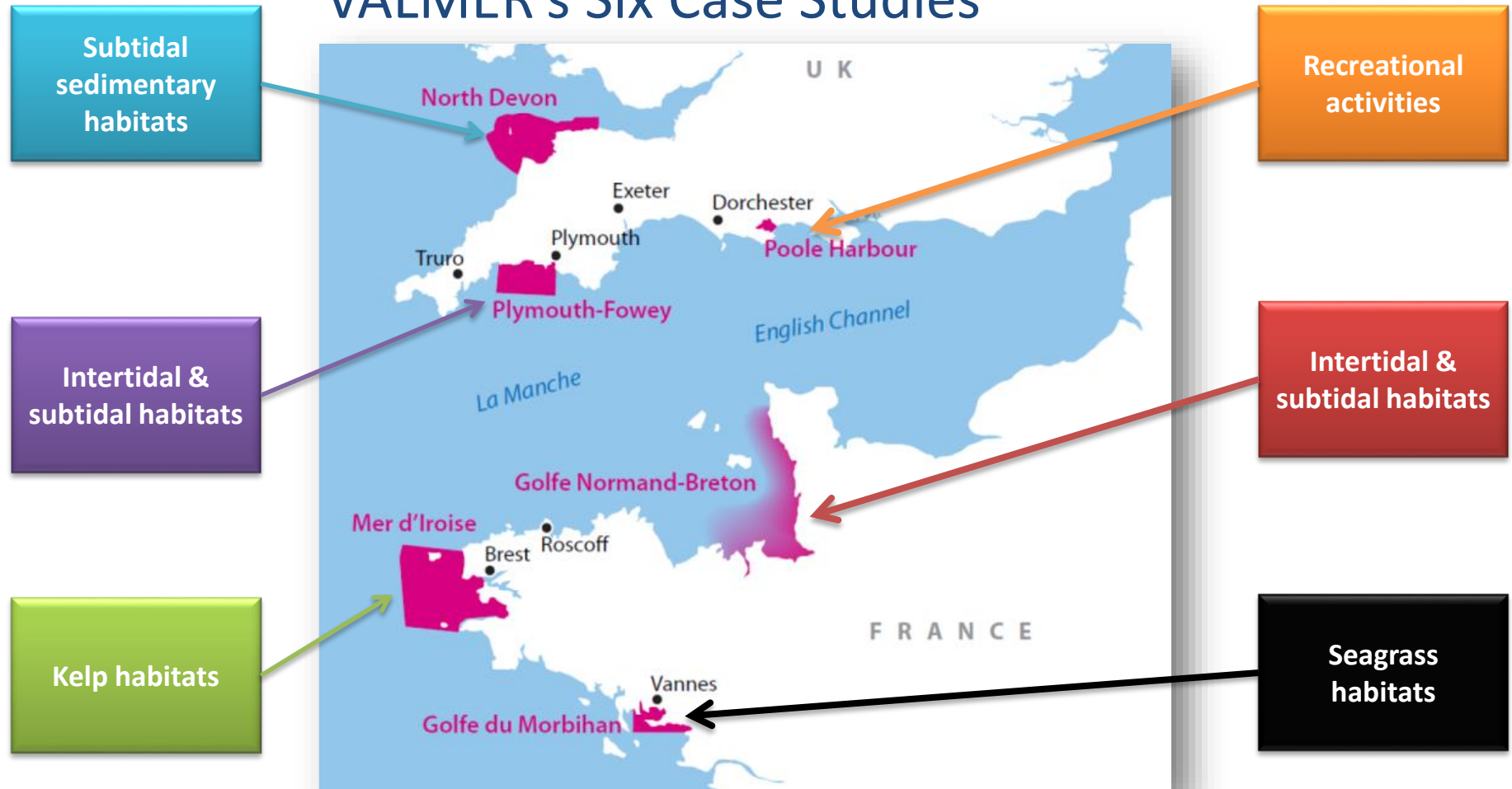
Valuing Ecosystem Services in the Western Channel (VALMER)

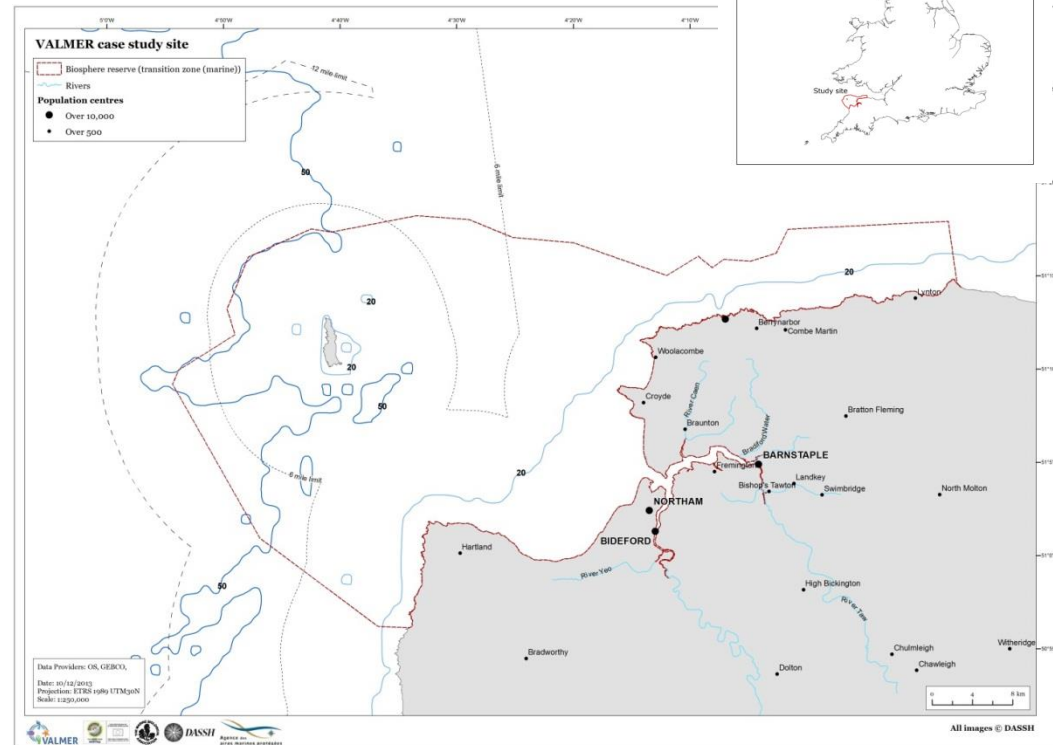
- VALMER was an 11 partner €4.7m project co-funded by the INTERREG IV A Channel Programme
- It aimed to examine how **marine ecosystem services assessment** could support **improved planning and management**
- The project ran from 1st September 2012 until 31st March 2015
- More information can be found at www.valmer.eu



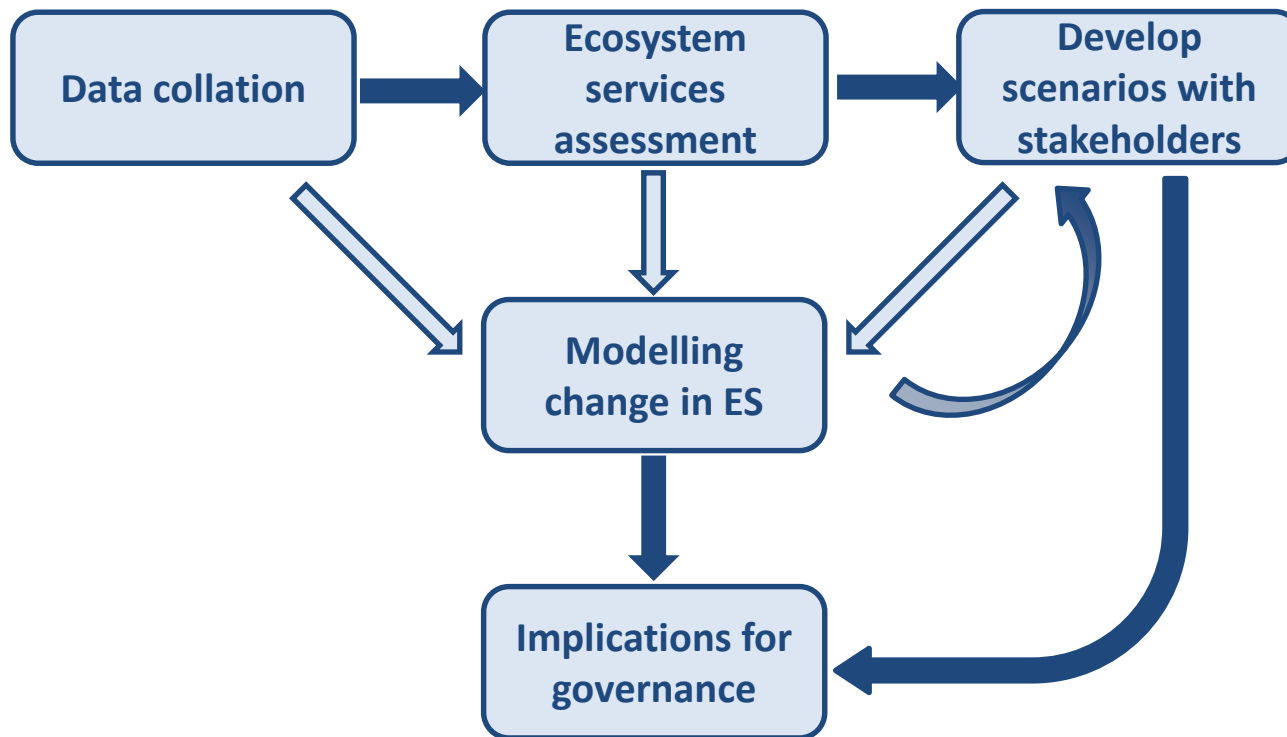
Valuing Ecosystem Services in the Western Channel (VALMER)

VALMER's Six Case Studies

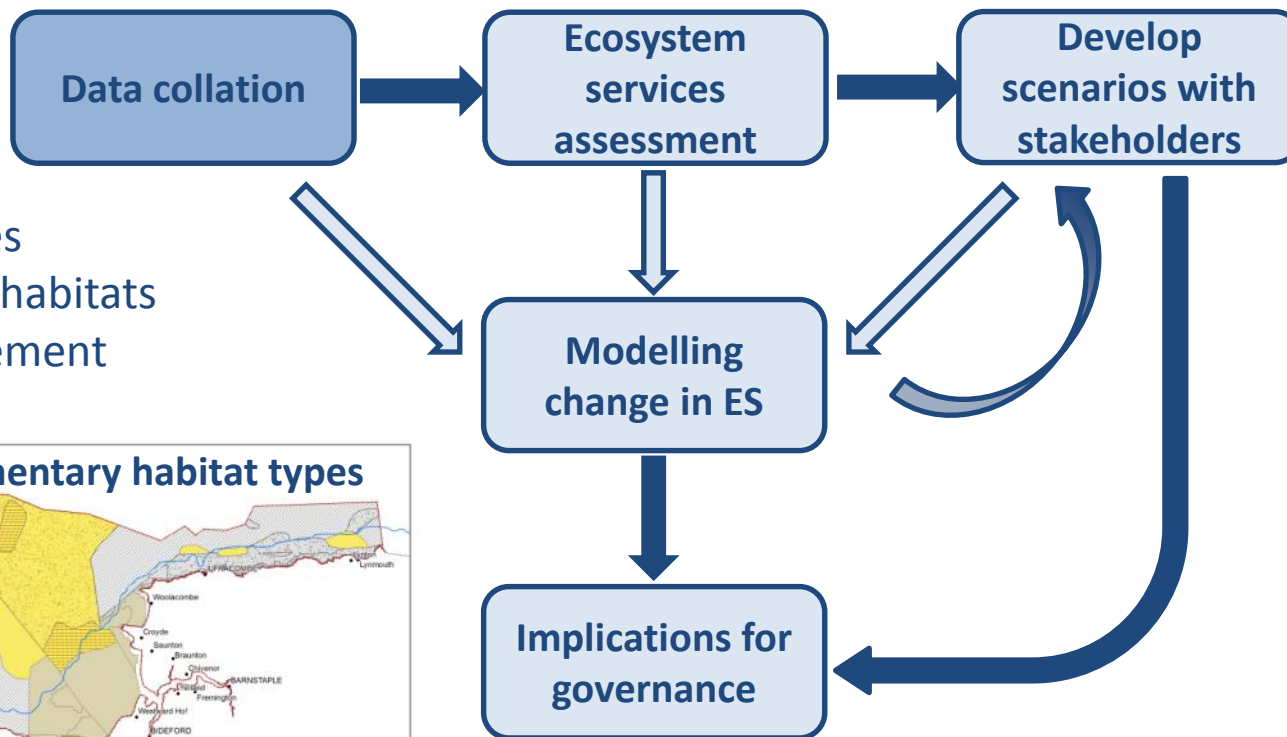




Valuing Ecosystem Services in the Western Channel (VALMER)

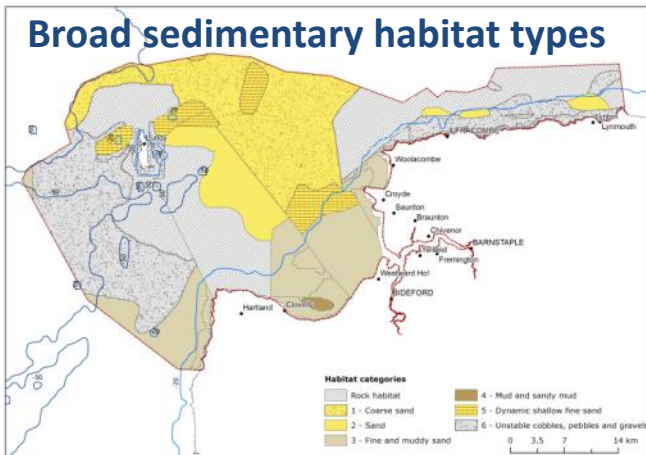


Valuing Ecosystem Services in the Western Channel (VALMER)

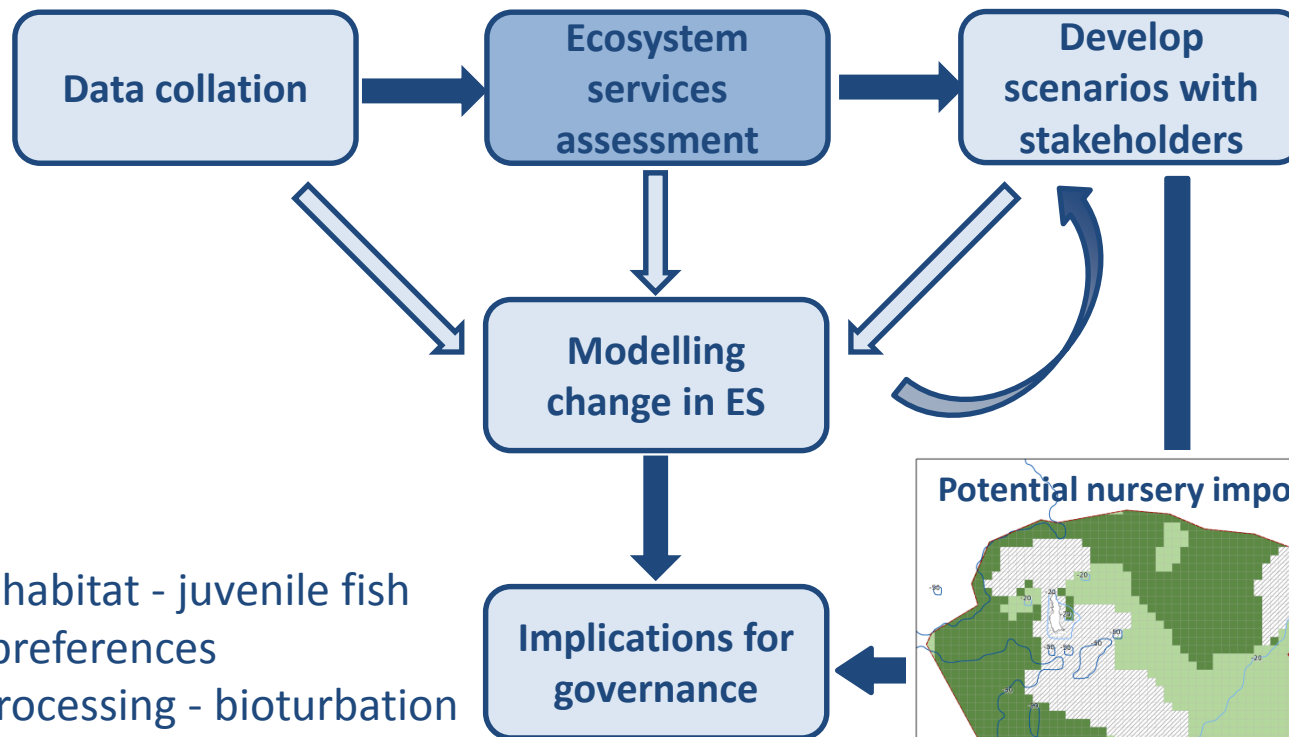


- Activities
- Seabed habitats
- Management

Broad sedimentary habitat types

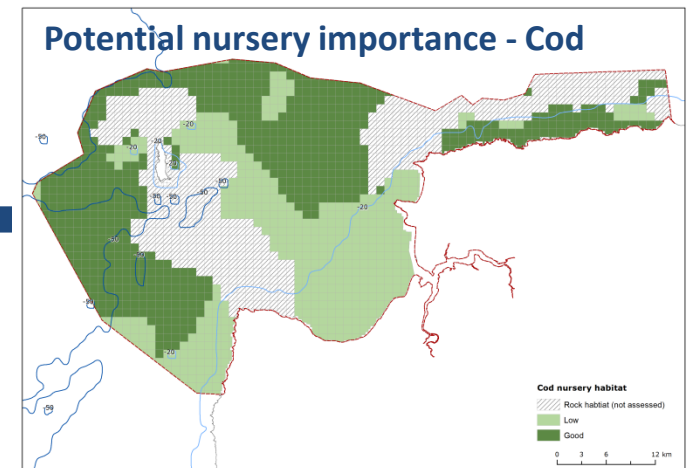


Valuing Ecosystem Services in the Western Channel (VALMER)

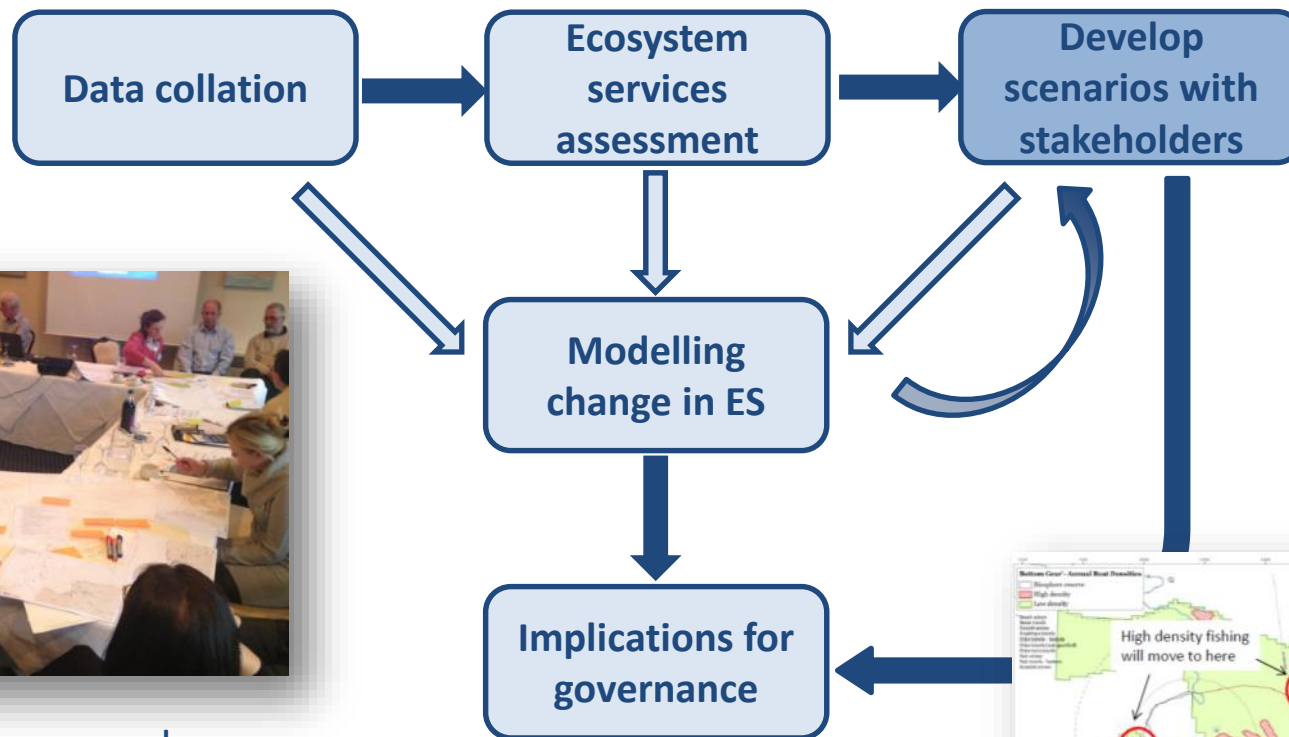


Approach

- Nursery habitat - juvenile fish habitat preferences
- Waste processing - bioturbation
- Carbon burial – sediment mud content

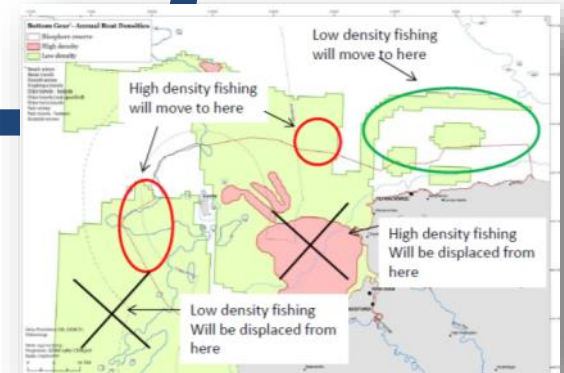


Valuing Ecosystem Services in the Western Channel (VALMER)

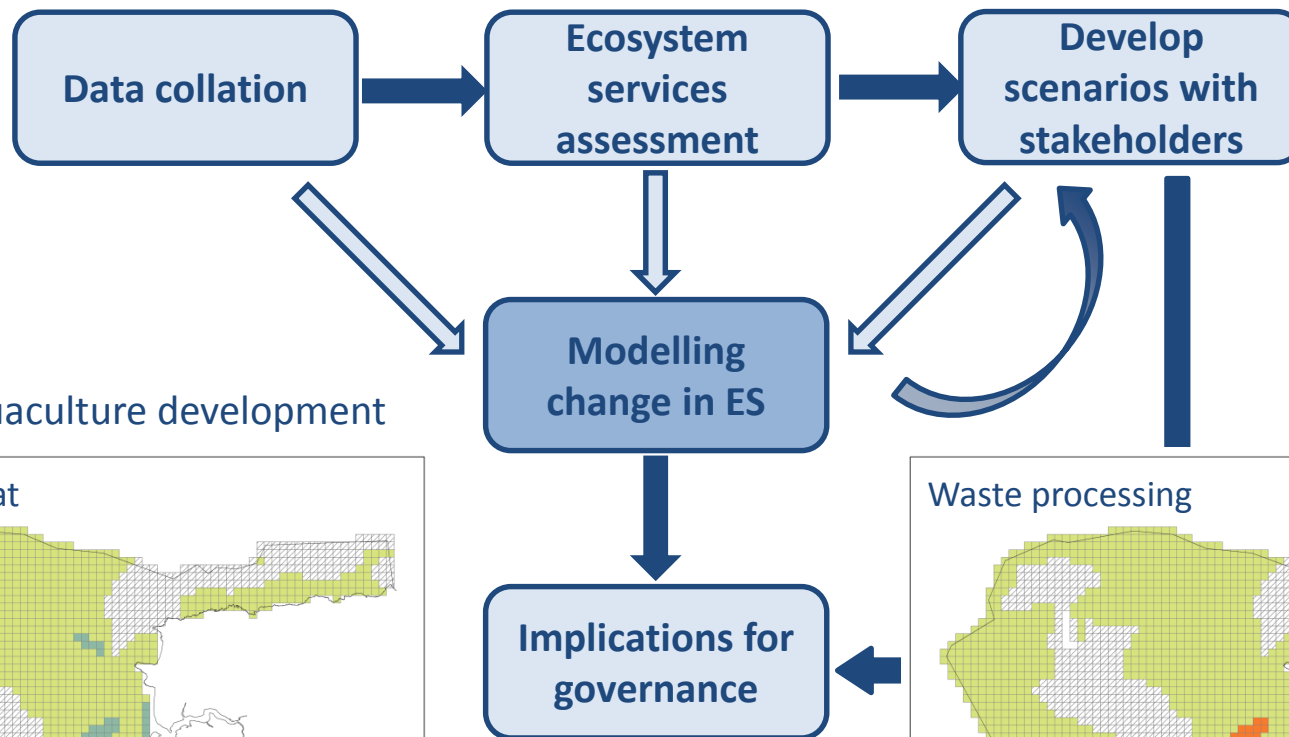


3 scenarios emerged:

- rMCZ designation
- Aggregate dredging
- Aquaculture development (offshore mussel farm)

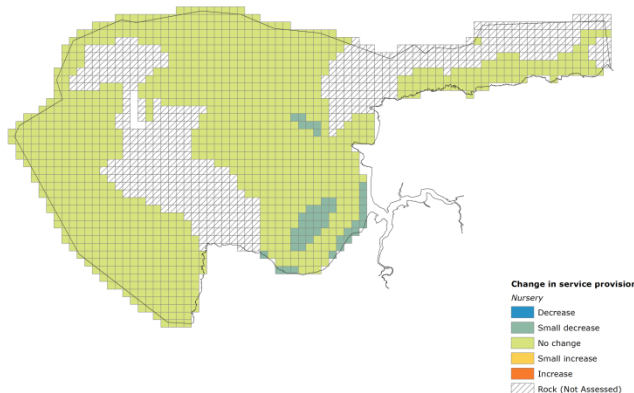


Valuing Ecosystem Services in the Western Channel (VALMER)

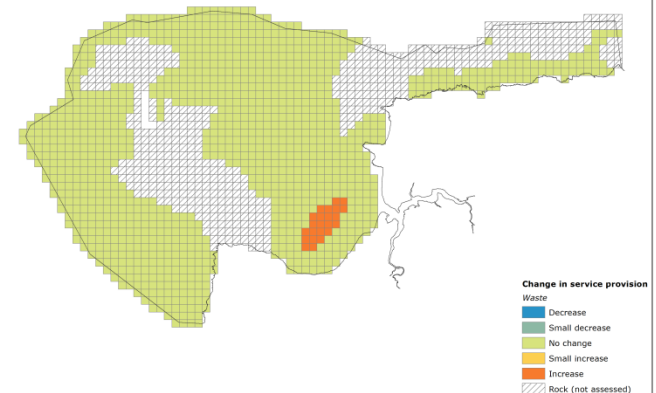


Scenario: Aquaculture development

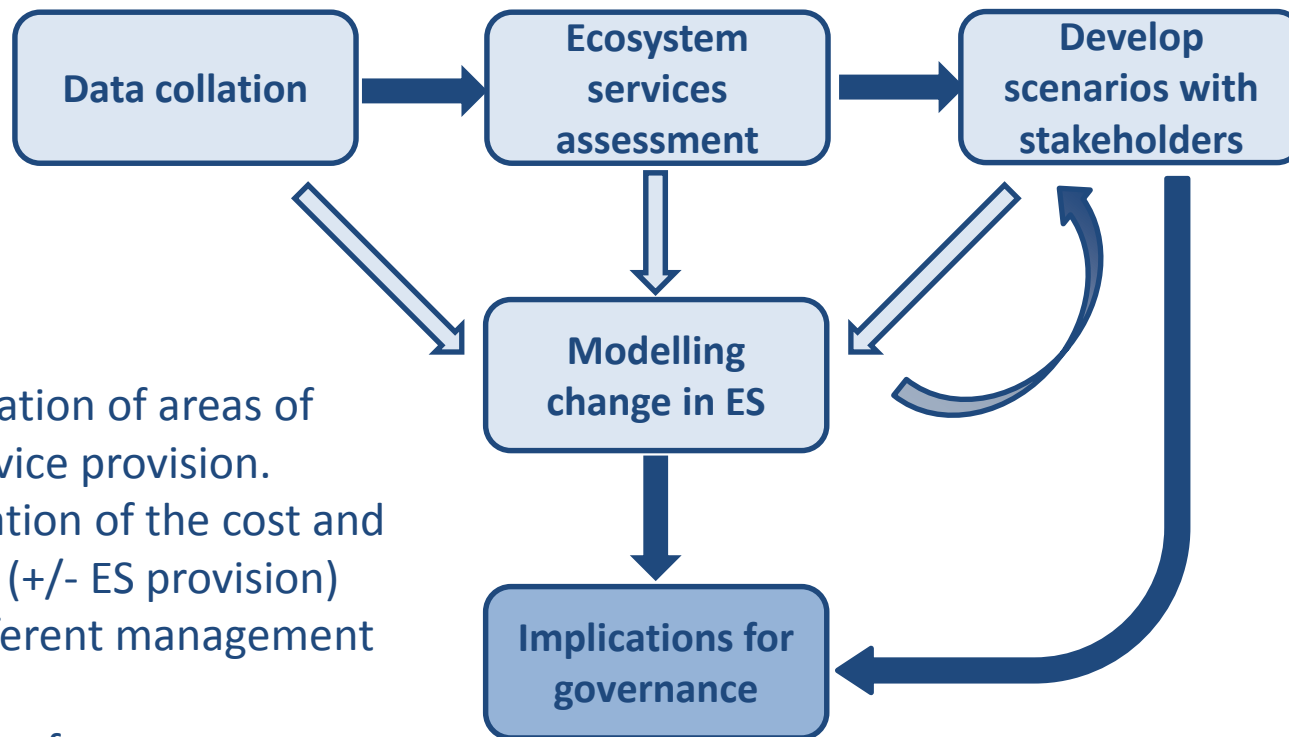
Nursery habitat



Waste processing



Valuing Ecosystem Services in the Western Channel (VALMER)



- Identification of areas of high service provision.
- Visualisation of the cost and benefits (+/- ES provision) with different management options.
- Relevance for management of MPAs, fisheries, marine planning.

Valuing Ecosystem Services in the Western Channel (VALMER)



Protected Area Network Across
the Channel Ecosystem



Hampshire & Isle of Wight Wildlife Trust
Protecting wildlife. Inspiring people.



**LIVE SUSTAINABLY
WITH
PLYMOUTH
UNIVERSITY
MARINE INSTITUTE**



**MARINE & COASTAL POLICY
WITH
PLYMOUTH
UNIVERSITY**

PML | Plymouth Marine
Laboratory



The VALMER and PANACHE projects were selected under the European cross-border cooperation programme INTERREG IV A France (Channel) - England, co-funded by the ERDF.