

South West Marine Ecosystems in 2014

Report edited by Keith Hiscock and Bob Earll with the section editors:

Angus Atkinson, Andy Bell, Doug Herdson, Tom Horton, Duncan Jones, Allen Kingston, Andrea McEvoy, Sue Sayer, Emma Sheehan, Alice M. Trevail, Claire Widdicombe and Ruth Williams

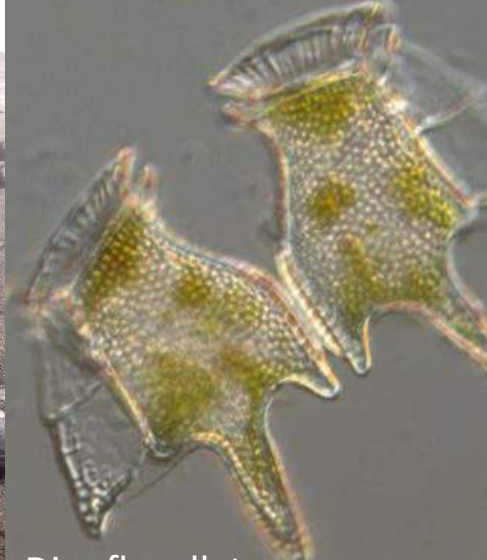


Impacts of weather events



Otter shell *Lutraria lutraria*
Whitsand Bay

Unusually high abundances



Dinoflagellate
Dinophysis tripos

Sightings



Risso's dolphin
Mounts Bay

'Returnees'



Crawfish *Palinurus elephas*
Hilsea Point Rock

SWME 2015

Section editors

Weather/Oceanography: Tim Smyth

Plankton: Angus Atkinson

Benthos: Paul Somerfield

Fish & turtles: Doug Herdson

Seals: Sue Sayer

Birds: Alice Trevail

Cetaceans: Tom Horton

'Management': offers?

Editor-in-chief

Keith Hiscock