

Somerset's Brilliant Coast Initiative



Beccy MacDonald
Coastal Survey Officer

Dr Mark Ward
Somerset's Brilliant Coast
Project Manager

@SWTcoast

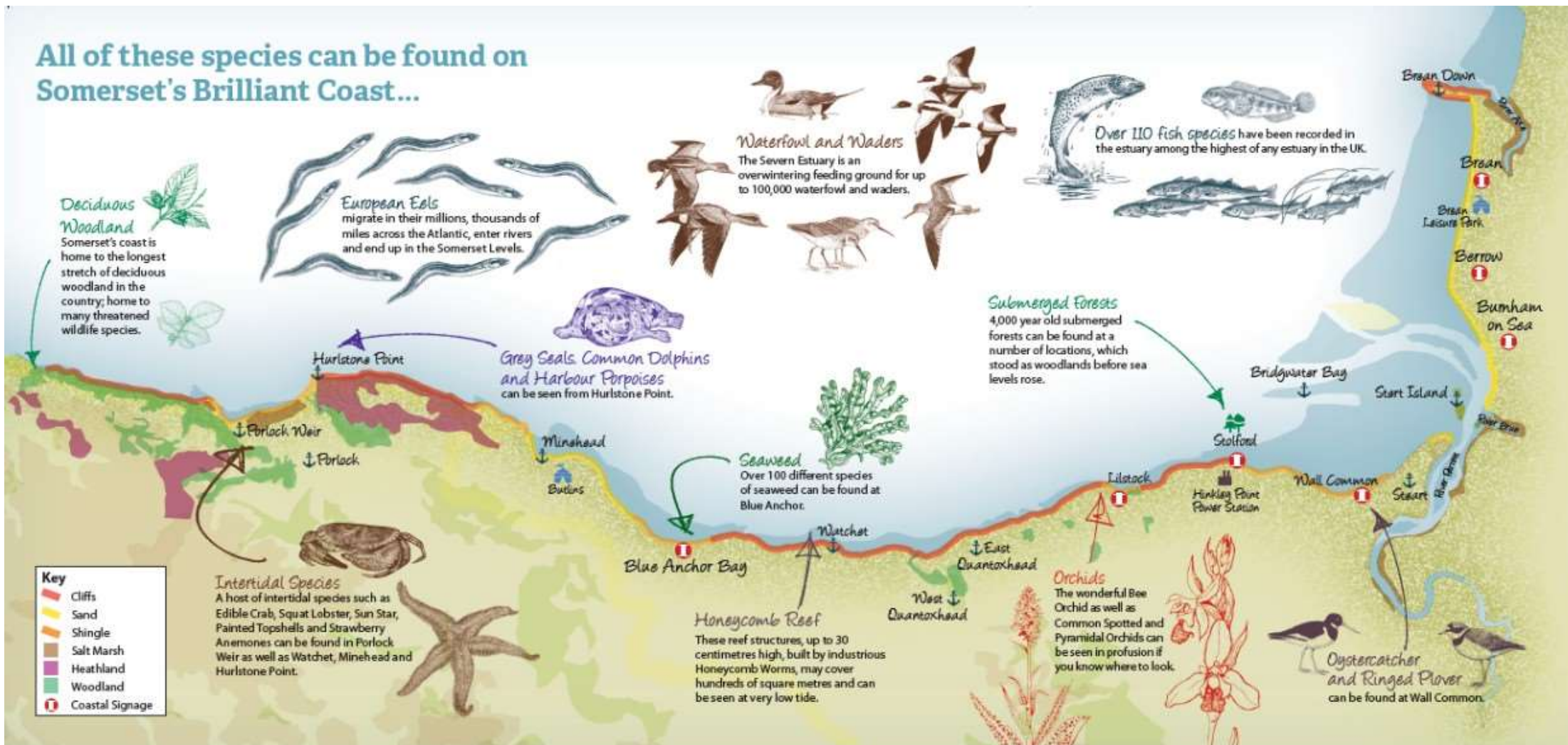


Sedgemoor
IN SOMERSET



Protecting the species you love in the county where you live

All of these species can be found on Somerset's Brilliant Coast...



Protecting the species you love in the county where you live

SWT LIVING COASTS:

Ecology



Policy & Campaigns



Community Engagement



Protecting the species you love in the county where you live

SWT LIVING COASTS:

Ecology

Coastal Surveys:

- Coastal Survey Project – Biotope Mapping - *Beccy MacDonald (Georgie Blow)*
- Hinkley B Environmental Surveys (EDF) - *Ben Bryant*
- Other partners/previous surveys
- The Wildlife Trusts – SHORESEARCH



Policy & Campaigns

Severn Vision
Fracking
Marine Pioneer (DEFRA)
Climate Change
Brexit - Steve Mewes



Community Engagement

Living Coasts Group – Nigel Phillips
*Surveys, Guided Walks, Talks, Coastal Conference,
Beach Cleans, Porpoise watches*
SOMERSET'S BRILLIANT COAST

Somerset's Brilliant Coast 2015



Protecting the species you love in the county where you live



© MARK PASSMORE/APEX

Protecting the species you love in the county where you live



The Peter De Haan Charitable Trust





Protecting the species you love in the *county where you live*



The Peter De Haan Charitable Trust



SOMERSET



Protecting the species you love in the *county where you live*





Protecting the species you love in the county where you live





Protecting the species you love in the *county where you live*



The Peter De Haan Charitable Trust





Protecting the species you love in the *county where you live*



The Peter De Haan Charitable Trust





Work For Us

Site Search

Go

Somerset Wildlife Trust

Somerset's Living Coast Discovery Map

A story map



Welcome

Glenthorne

Porlock

Minehead

Dunster

Blue Anchor

Watchet

Helwell Bay

Kilve

Lilstock

Stolford

Wall Common

Burnham



Use this map to discover more about Somerset's brilliant coast. Click on the tabs for basic information about some of the shores you can visit. Discover even more by clicking on the and 'camera' icons for stunning images and more

detailed information about the wildlife, habitats and landscapes.

The Somerset Wildlife Trust run events along the coast throughout the year. Find out more on our [Events page](#).

Key to icons



Parking



Toilets



Food



Dogs

Please check local information for details of any fees, opening times and for seasonal restrictions on dog access. Some more popular beaches do not allow dogs between May and October.

SAFETY BY THE SEA: Somerset's coast is very dynamic. There



LEGEND

Points of interest



Info



Photo



Parking

OVERVIEW MAP



Earthstar Geographics | OS, Esri, HERE, Garmin

POWERED BY
esri



Protecting the species you love in the county where you live

With thanks:



The Peter De Haan Charitable Trust



Protecting the species you love in the county where you live



Somerset's Brilliant Coast

Mark Ward, Somerset's Brilliant Coast Project Manager

@SWTcoast



Protecting the species you love in the county where you live

Somerset's Brilliant Coast 2018-2021

3 year project - Aug 2018 – Aug 2021

Funders:

Community Impact Mitigation Fund

National Trust

Somerset Wildlife Trust



Protecting the species you love in the county where you live

Staff:

- Mark Ward Project Manager
mark.ward@somersetwildlife.org 01823 652415
- Tilda Gibbs Project Officer
matilda.gibbs@somersetwildlife.org 01823 652433



Protecting the species you love in the county where you live

NOT JUST THE 'USUAL' AUDIENCE – harder to reach groups

Aim:

DIFFERENT APPROACHES

To develop and deliver novel and exciting community engagement, education and volunteering initiatives across the Somerset coast that celebrate our fabulous coastal wildlife and landscapes, encourage exploration and support local communities and volunteers to help look after and value it.

COASTAL AMBASSADORS

*These initiatives will not only benefit the local environment but will also benefit people's **health and wellbeing** through nature connection and active participation.*

ESPECIALLY THOSE IMPACTED BY HINKLEY

LOCALS NOT TOURISTS



SOMERSET'S BRILLIANT COAST

3 Strands:

Curious Coasts

Parish Shores

Wild Beach



Protecting the species you love in the county where you live

Curious Coast

A programme of events to inspire local people to learn about Somerset's Brilliant Coast and become involved in its conservation.

Community engagement, events, heritage, walks, rockpool rambles, geology, creative arts, citizen science, volunteering, coastal ambassador scheme



Protecting the species you love in the county where you live

SOME FUTURE EVENTS

- 28th April – Otterhampton Tea & Cake
- 4th May – Coastal Foraging – Brean Down
- 19th May – Coastal Plant – Berrow Dunes
- 20th May – Rocky Shore Survey – Hinkley
- 1st June – Quantocks AONB – Beach Day – Kilve
- 8th June – **World Ocean's Day – Dunster Beach**
- 30th July – Family Seashore Safari – Brean Down
- 31st July – Family Seashore Safari – Minehead
- 3rd August – Lower Shore Foray – Helwell Bay
- 10th August – Insects of Berrow Dunes
- 11th August – SeaWatch Training – Hurlstone
- 31st August – Lower Shore Foray – Porlock
- 1st September – **LIVING COAST CONFERENCE - Kilve**



Wild Beach

Work with local schools and youth groups to develop and deliver outdoor learning opportunities, which use the coast to give children a connection with nature and provide them with valuable personal experiences.



Wild Beach activities can include:

- Coastal habitat scavenger hunts
- Mud dipping and rock pool exploring
- Shelter making
- Sand sculptures
- Drift wood collection and fire lighting
- Kelly kettles and hot chocolate
- Wild food and wild cooking
- Beach games



Protecting the species you love in the county where you live

Parish Shores

A staged, participatory approach to engaging the community through Parish Councils enabling them to guide Somerset Wildlife Trust in the best way to engender a sense of local ownership and a solid legacy for coastal appreciation and protection.

CONNECTING LOCAL PEOPLE WITH NATURE

PROMOTING HEALTH AND WELL-BEING

LINKED TO COASTAL ENVIRONMENTS

LASTING LEGACY?



Protecting the species you love in the county where you live

**PLASTIC FREE
MINEHEAD**
SURFERS AGAINST SEWAGE



Parish Shores



poetrypin.info



Kilve Beach:
Geo-tag
Nature Trail



Berrow Dunes LNR:
Nature Interpretation
Well-being walks training
Citizen Science



Stogursey Parish:
“Remembering our Forgotten Coast”
Inter-generational Project



Sedgemoor
IN SOMERSET



SOMERSET

Protecting the species you love in the county where you live

We need your help and advice:

Volunteers for Biotope ground-truthing

Citizen Science projects (esp with South West links)

BioBlitz approaches

Ideas for novel ways of engagement

Climate change & plastics

MUD!!

Fisheries (Hinkley inlet pipes...)

SOMERSET LIVING COAST CONFERENCE 1st Sept



Want to get involved?

Please come and talk to us or take a look at our website

www.somersetwildlife.org/Living_seas



Some extra 'shout outs'

EUROPEAN MARINE SCIENCE EDUCATORS ASSOCIATION (EMSEA)

AZORES (16-20 SEPT) – REGISTRATION & ABSTRACT CALL (inc bursaries)

OCEANS FOR HOPE CAMP – Pembrokeshire (27-30 SEPT)

EXTINCTION REBELLION – International Rebellion week

LONDON from 15th April



Somerset Coast – It's Brilliant!



Any Questions?

Protecting the species you love in the county where you live

