



Marine Management Organisation



South West Marine Plan Update

Neal Gray – Marine Planner South West



ENVIRONMENT
ISO 14001
CERTIFIED



QUALITY
ISO 9001
CERTIFIED

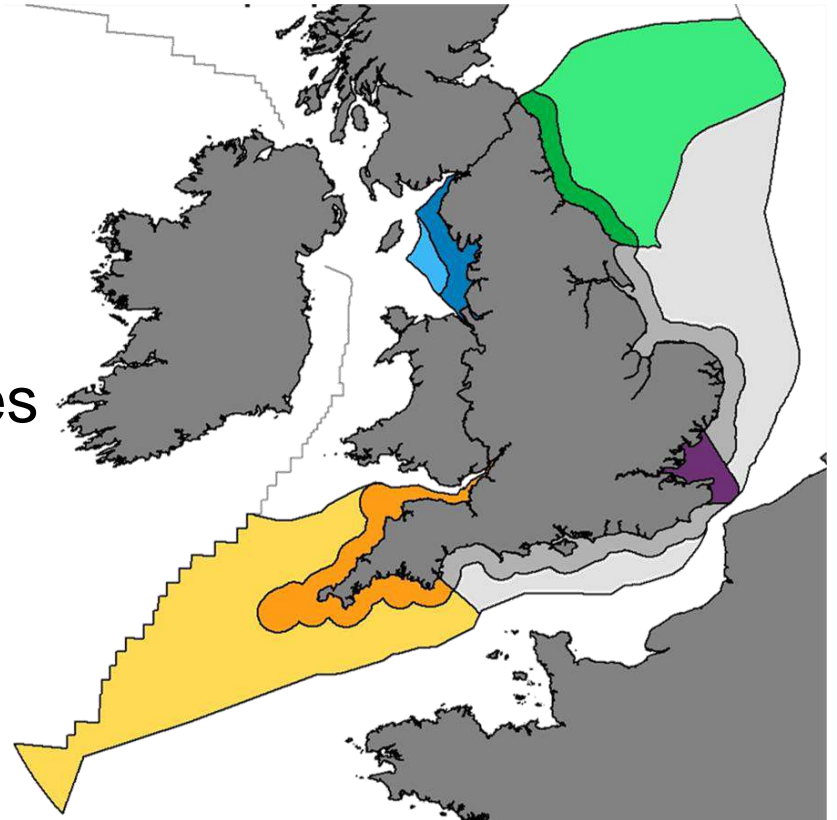


What Will Marine Plans Achieve?

- Shape the growth of our seas, managing the balance between need and capacity
- Promote sustainable economic growth
- Protect marine and coastal ecosystems
- Bring together evidence to better understand our seas
- Solve future problems today – creating local plans for local issues

Marine Planning

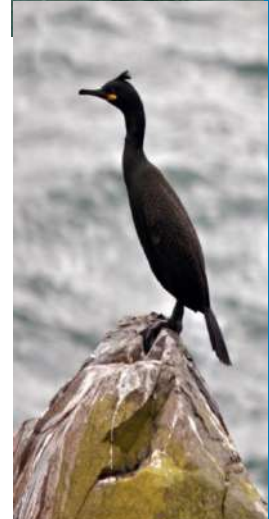
- Will provide detailed policy and guidance for each marine plan area
- Will manage the increasing demand on space and resources
- Will enable sustainable economic growth whilst protecting the marine environment



makes sure the **right activities** take place in the **right place** and in the **right way** placing sustainable development at the centre of all decisions.

Benefits of marine planning

- Enabling mechanism
 - Plan-led management is consistent and transparent
 - added value through mapping
 - increased certainty for developers/investors
- Strategic and integrated approach
 - across sectors, delivery partners, other measures
 - across Economic, Environmental, Social considerations
 - provides a view of the future (20 years)
 - Recognise local interests – reject a ‘one size fits all’ approach
- Learning through doing
 - Evolution not revolution....ambitious but manage expectations
 - Early stakeholder engagement
 - Improving the evidence base

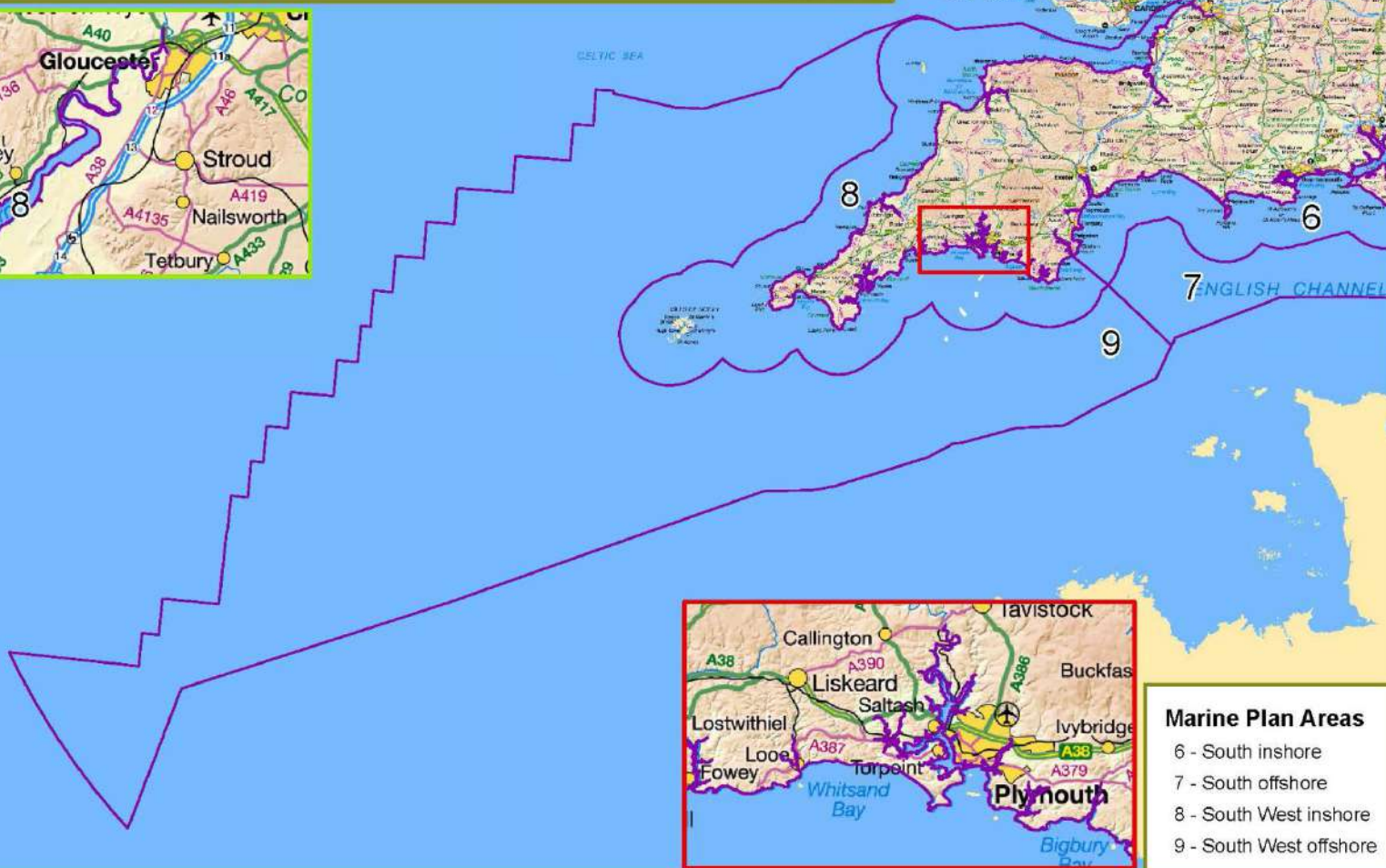




Marine
Management
Organisation

South West Inshore and Offshore Plan Areas

October 2015

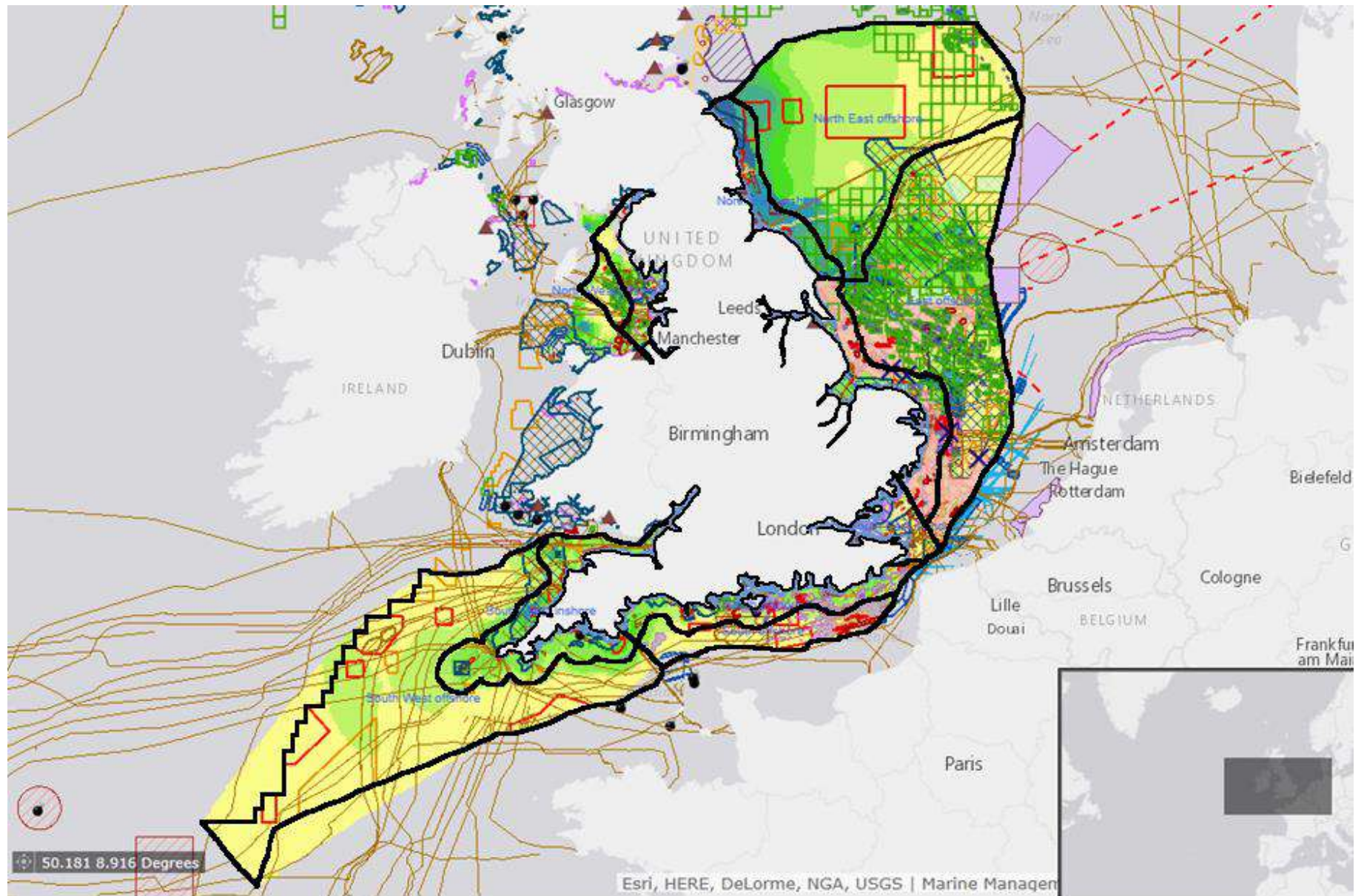


Marine Plan Areas

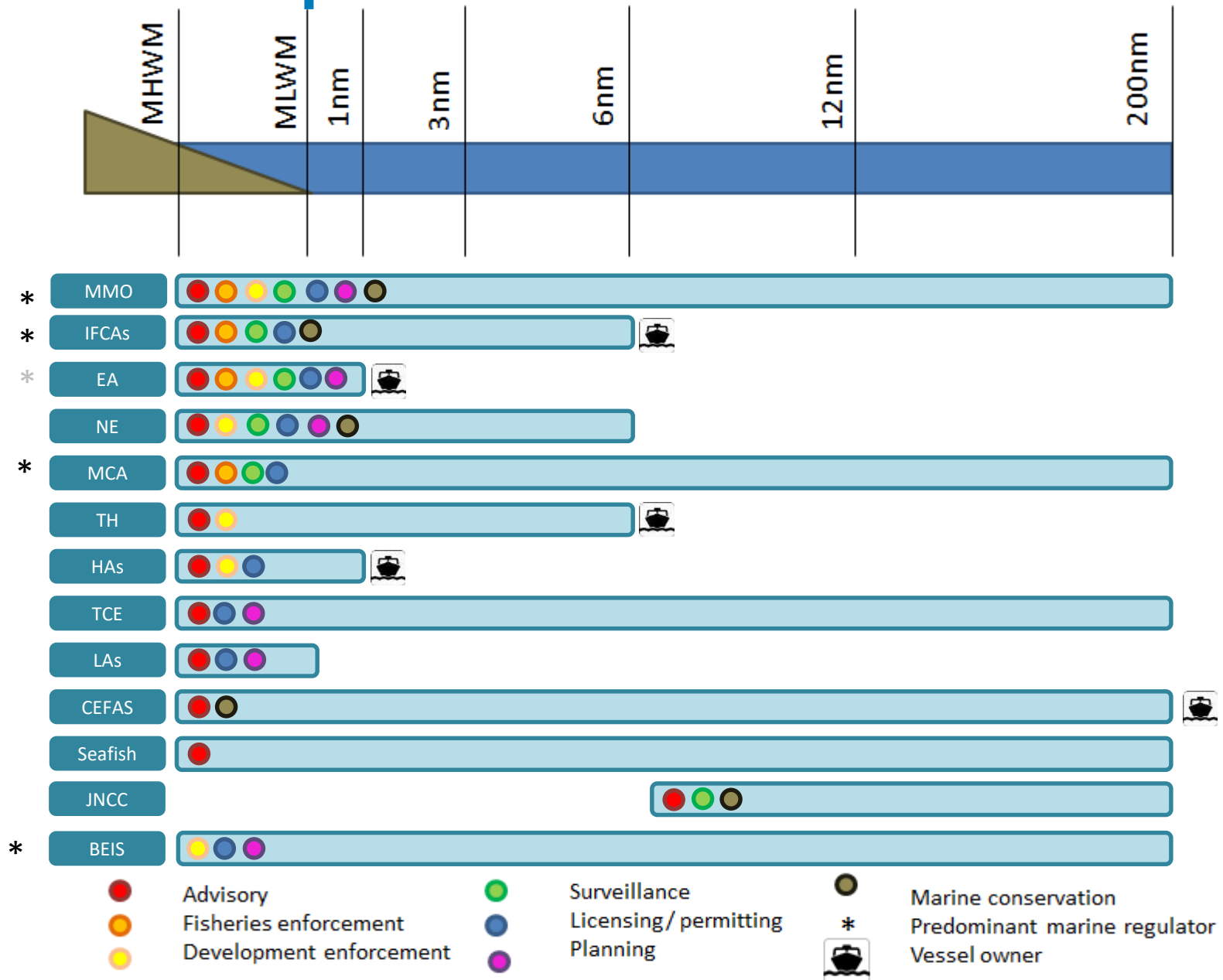
- 6 - South inshore
- 7 - South offshore
- 8 - South West inshore
- 9 - South West offshore

Map produced in ETRS89 UTM 30N. Not for Navigation. Reproduced with the permission of the Marine Management Organisation, Ordnance Survey and UK Hydrographic Office.


Why? - Busy marine plan areas



Varied responsibilities



Marine planning documents



Marine and Coastal Access Act 2009

CHAPTER 23

CONTENTS

PART 1

THE MARINE MANAGEMENT ORGANISATION

CHAPTER 1

ESTABLISHMENT

1 The Marine Management Organisation

2 General objective

3 Performance

CHAPTER 2

TRANSFER OF FUNCTIONS TO THE MMO

Sea Fish (Conservation) Act 1967

4 Licensing of fishing boats

5 Restrictions on time spent at sea, appeals

6 Trans-shipment licences for vessels

7 Regulations supplementary to sections 4 and 5A

8 Exemptions for operations for scientific and other purposes

Nature conservation

9 Licences to fish or take oysters

10 Wildlife and Countryside Act 1981

11 Sea Fisheries (Wildlife Conservation) Act 1992

Generating and renewably energy installations

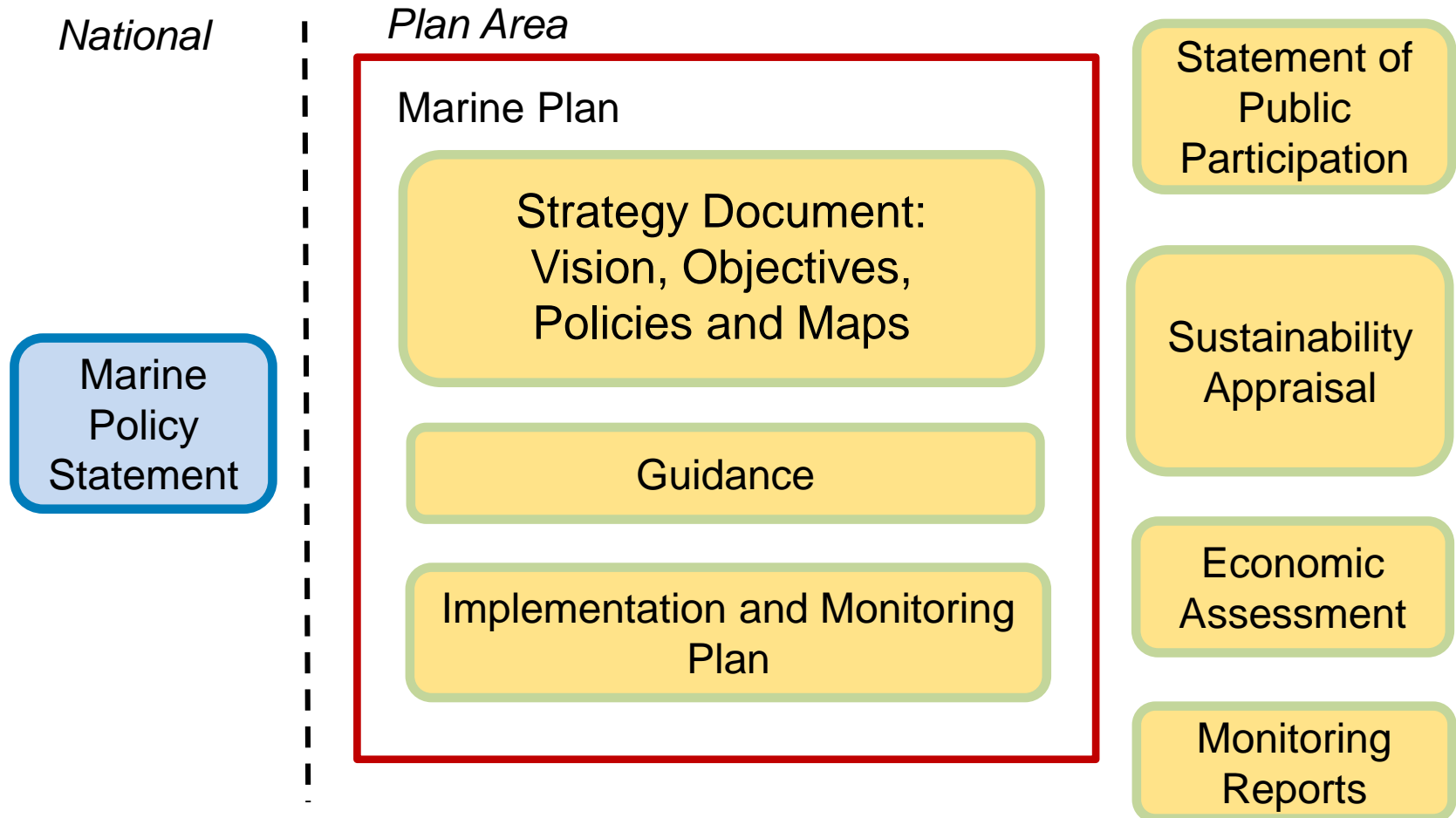
12 Certain consents under section 36 of the Electricity Act 1989

 HM Government

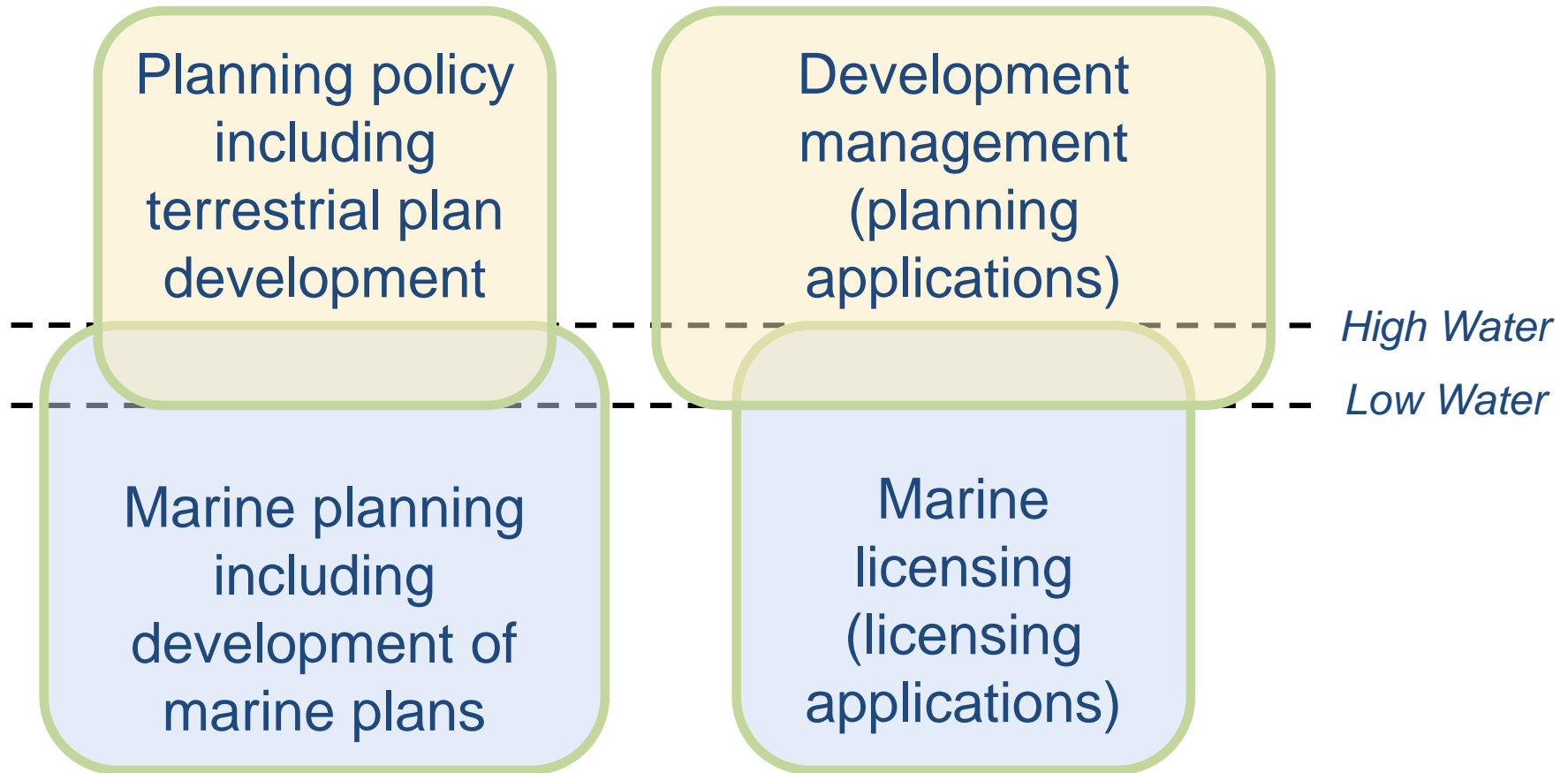
UK Marine Policy Statement

HM Government
Northern Ireland Executive
Scottish Government
Welsh Assembly Government

Marine Plan Components



Marine planning and licensing in context



Marine Planning – General Principles

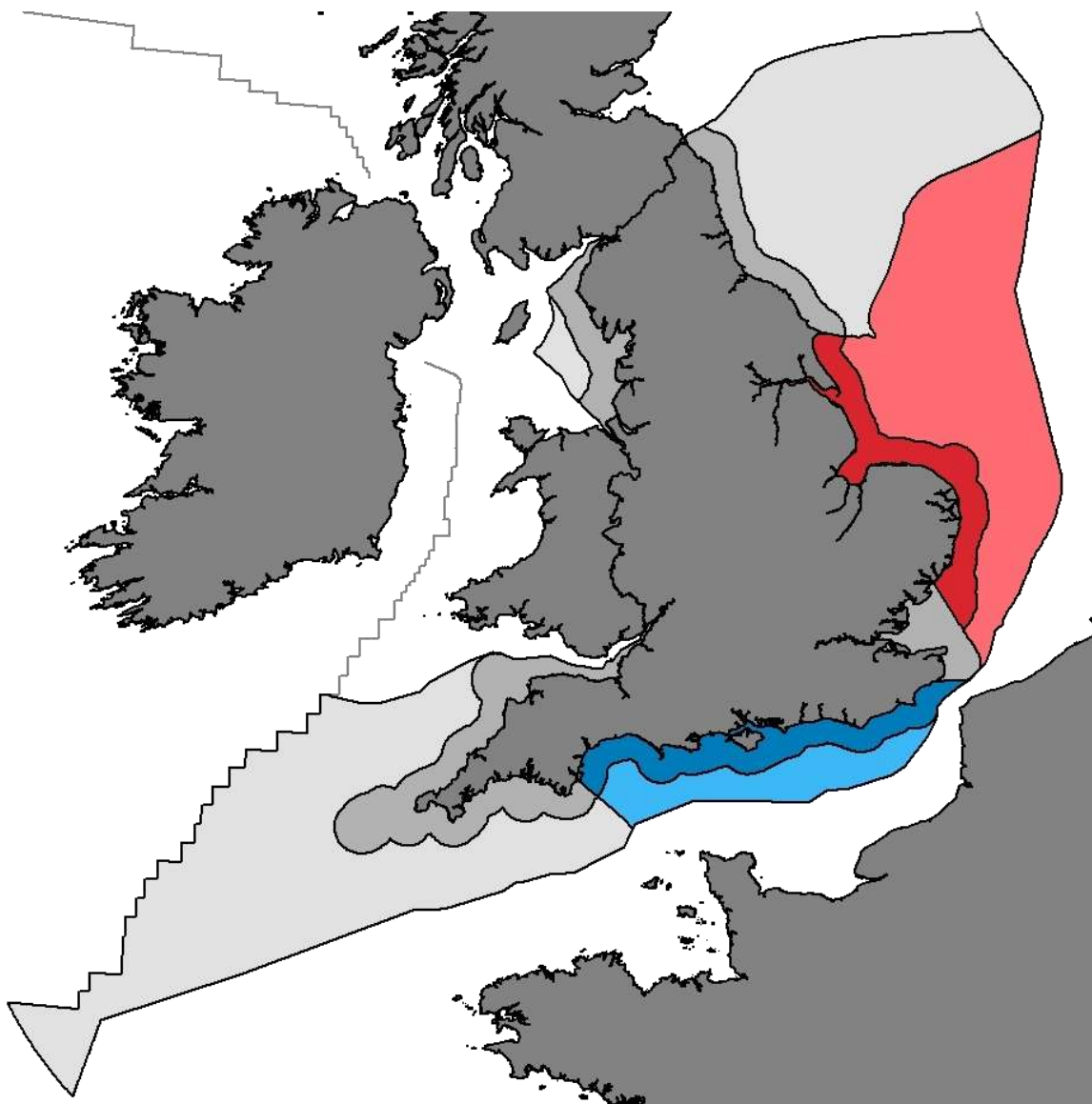
- Integration of environmental, economic and social considerations. Promotes Sustainable economic development
- Meets high-level marine objectives
 - Sustainable marine economy
 - Strong healthy and just society
 - Living within environmental limits
 - Promoting good governance
 - Using sound science responsibly
- MSP works at a strategic level
- Promotes Blue Economy

Marine Planning – General Principles

- Few prescriptive policies
- Designates areas of co-location
- Identifies best sites for activities
- Ecosystem approach
 - Recognises that human activity is part of an ecosystem approach
- Evidence based planning

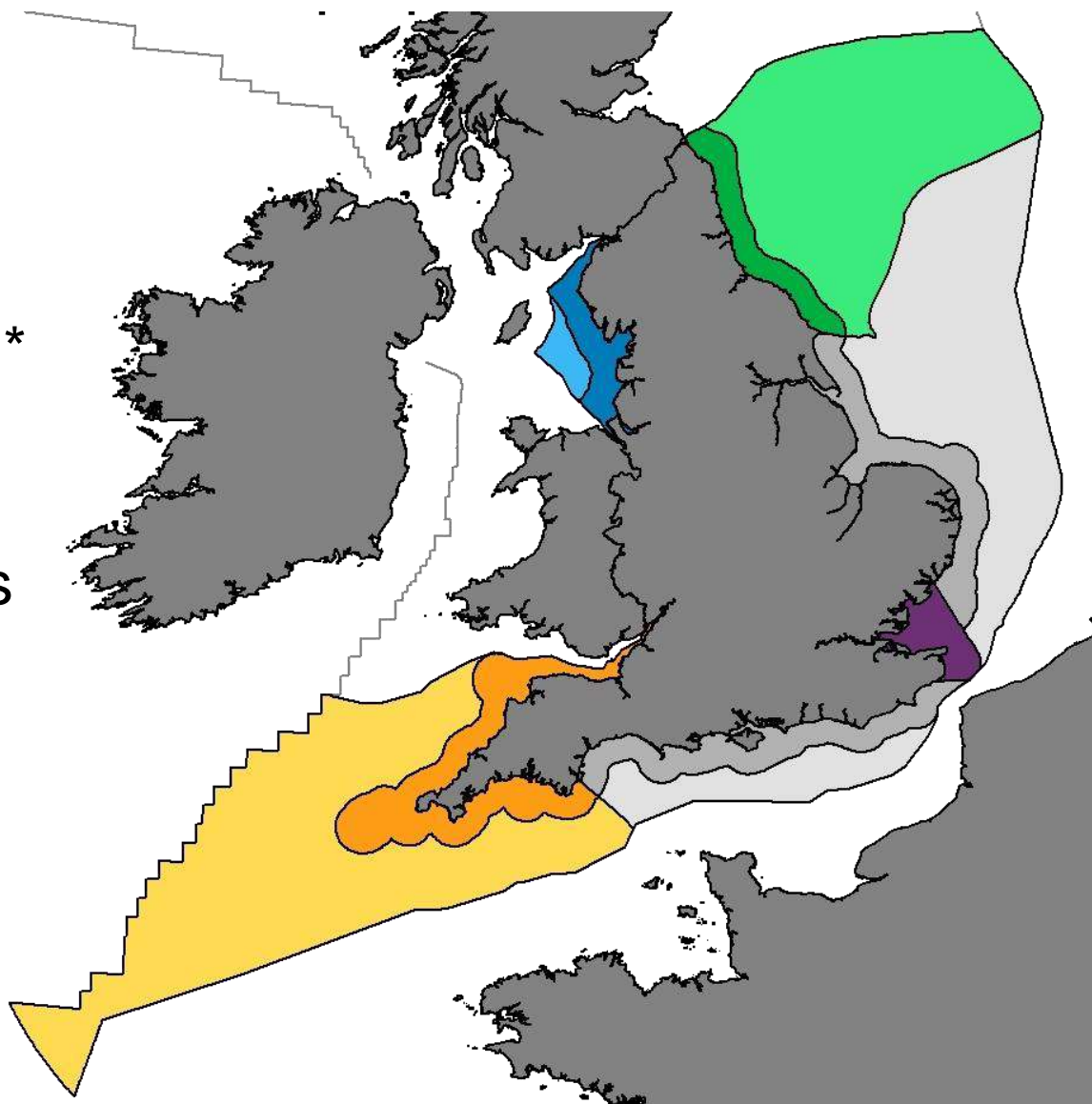
Progress to date

- East inshore and offshore adopted April 2014
- South inshore and offshore consultation early 2017



Remaining plan areas

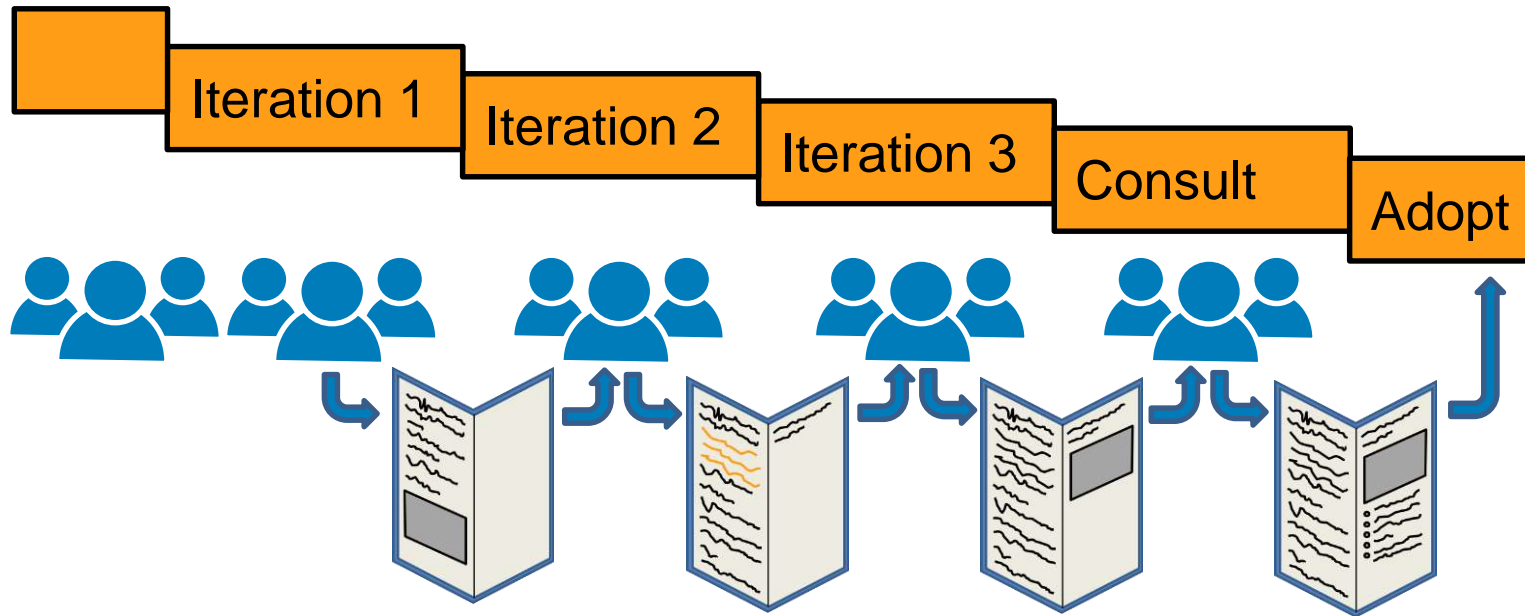
- NE, SE, SW, NW developed concurrently
- Publish all by 2021*
- Use experience from East and South plan process



* Adoption by 2021. Aim for June 2020 for contingency, or any Independent Investigation if required

Iterative plan development

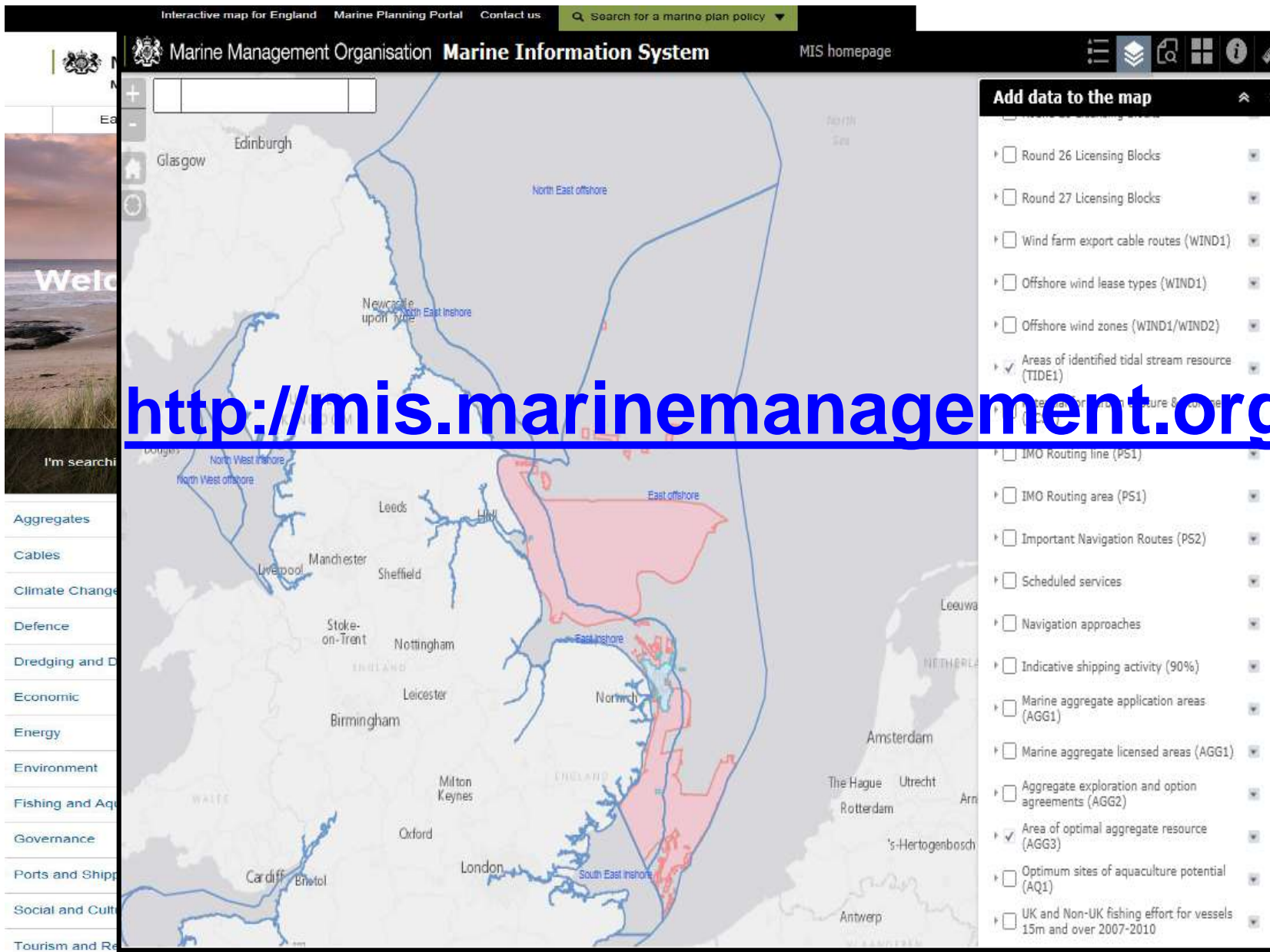
Identify, develop and test the plan material in repeated cycles with each iteration evolving and adding content



Benefits of iterative working

- Outputs delivered early to build on firm foundations
- Visibility and feedback opportunities at multiple stages
- Responsive to change

Marine Information System (MIS)



Timeline

Key Milestones	Date
Approval of Statement of Public Participation (SPP)	June 2016
Call for issues with supporting evidence	July 2016
Engagement on the first products - Iteration 1	Spring 2017
Engagement on the second products - Iteration 2	Spring 2018
Engagement on the third products - Iteration 3	Spring 2019
Secretary of State approves draft marine plans prior to consultation	Summer 2019
Public consultation starts (for 12 weeks)	Autumn 2019
Secretary of State approves final marine plans for adoption - SW, SE, NW, NE	Spring 2020*
Publish adopted marine plans	Summer 2020*

* Adoption by 2021. Aim for June 2020 to allow contingency, or Independent Investigation if required

Iteration 1 Workshops

Outputs

- **Common issues and policy responses**
- **User stories** – help us to better understand your needs
- **Digital plans** – making marine plans accessible in a digital format
- **Next steps – moving towards iteration 2...**

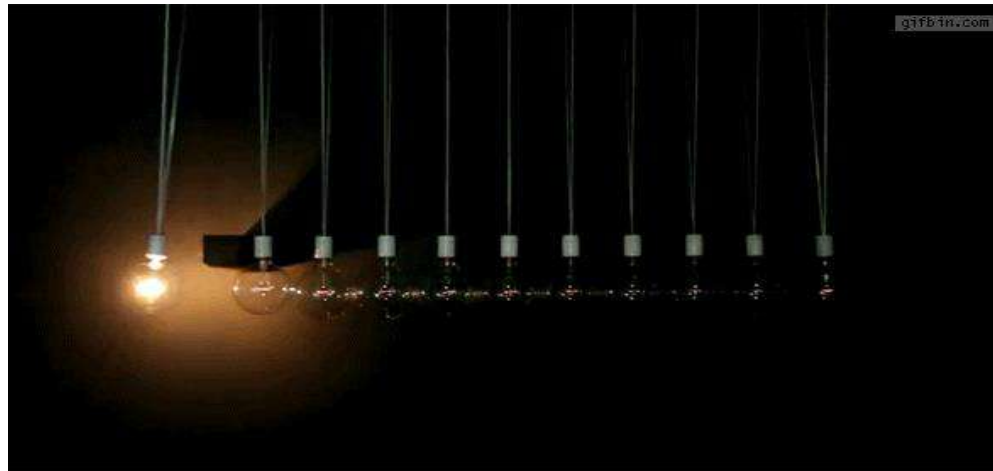
Iteration 2 – draft plan area vision

- Currently using UK high level vision from the Marine Policy Statement.
- Want to make vision more specific to plan area as we have done in the East and South marine plan areas
- Learning from iteration 1 feedback (now!)
- Will start to form this through iteration 2



Iteration 2 – outputs

- Draft plan area visions
- Test objectives with stakeholders – using HLMOs
- Outputs from this engagement feed into cause and effect models
- Using this work, start developing options for addressing cause and effect



- Options work with Sustainability Appraisal
- Engagement around alternatives/options

Next engagement points

- **Now – April**: Clarification around any comments on iteration 1
- **Summer 2017**: Targeted engagement around alternatives/options
- **Early 2018**: Engagement on iteration 2
- **Ongoing**: talk to your local MO

North East – Milly Metcalfe

South East – Tom Pavitt

North West – Sam Wright

South West – Neal Gray and Nick Boase

In the Meantime ...

- Stakeholder engagement continuing in the South West Plan area
- Do get in touch if you wish to discuss marine planning
- Interested in hearing about potential conflicts of use or issues within the marine environment

Issues and Evidence

Issues are opportunities or challenges likely to drive, or be subject to changes within the marine plan areas over the life of the plans

Evidence:

1. Characterises issues (e.g. cause, effect, interactions, priority, gaps)
2. Underpins marine plans by informing the policy response
3. Is published on our website (Evidence Base) and anyone can comment on



Thank you!

Contact

Nick Boase (Hayle)

020 822 57066

nick.boase@marinemanagement.org.uk

Neal Gray (Plymouth)

020 822 56647

neal.gray@marinemanagement.org.uk

Jess Churchill-Bissett (Brixham)

020 822 58240

jessica.churchill-bissett@marinemanagement.org.uk





Questions?