



NATIONAL  
MARINE  
AQUARIUM



# Community Seagrass Initiative

**Jessica Mead**  
**Weymouth Project Officer**

DRIVING MARINE CONSERVATION THROUGH ENGAGEMENT

# CSI Project Partners



LOTTERY FUNDED



Torquay Coast &  
Countryside Trust

COASTS



TORQUAY'S COASTAL  
ZOO AND AQUARIUM



EXPLORE  
WITH  
PLYMOUTH  
UNIVERSITY  
MARINE INSTITUTE

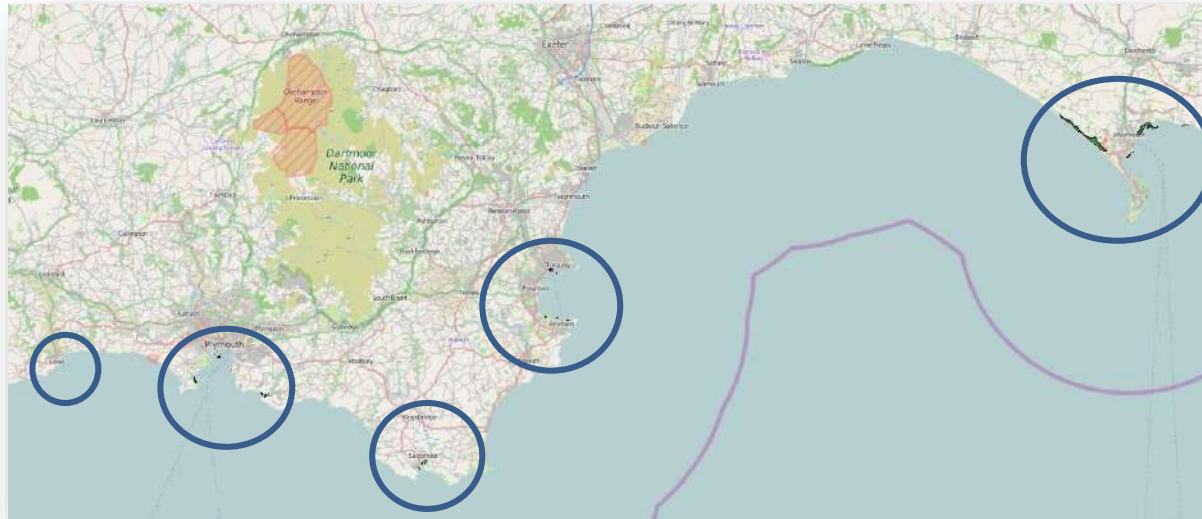


# The Project



The CSI provides opportunities to learn about seagrass between:

- Looe (Cornwall) and
- Ringstead (Dorset) - over 191 miles of coastline
  
- 19 sub-tidal seagrass beds based around 3 centres:
  - **Plymouth and Looe**
  - **Torbay and Salcombe**
  - **Weymouth**



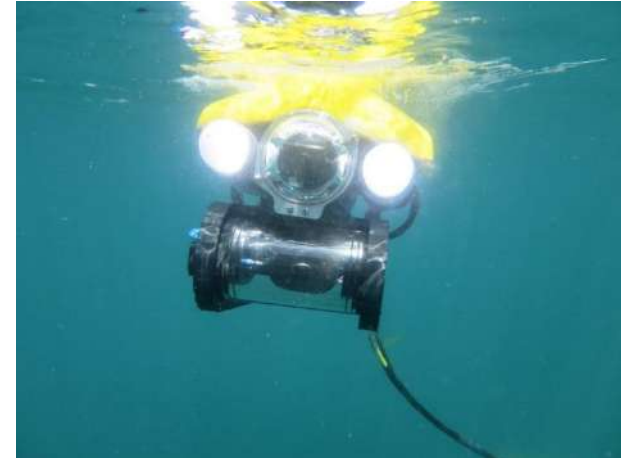


# Volunteering Opportunities



**Sailing, Diving and Paddling into Science**

# Public Engagement



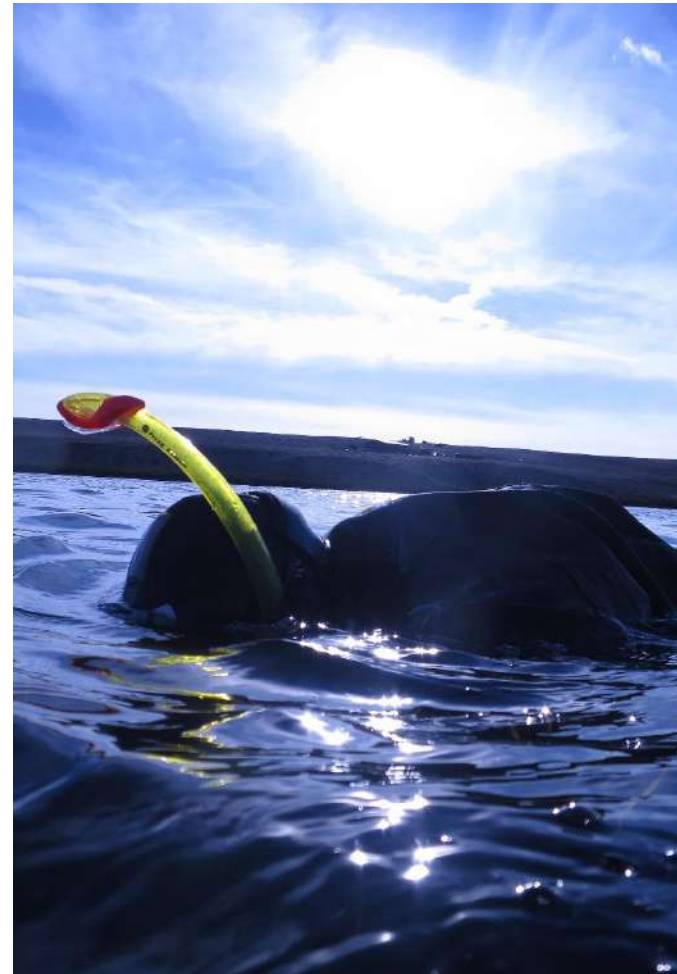
**School visits and online lessons**

**Public Events**

**Permanent and travelling exhibits**



# Other Research



**Seagrass Friendly Moorings**

**Seed Cultivation Trails**

**Snorkel and drone surveys in the Fleet Lagoon**



# Any Questions?



[Jessica.mead@national-aquarium.co.uk](mailto:Jessica.mead@national-aquarium.co.uk)

[www.csi-seagrass.co.uk](http://www.csi-seagrass.co.uk)

